

OPTN Minority Affairs

Descriptive Data Request

## Refit Kidney Donor Profile Index without Race and Hepatitis C Virus 6 Month Monitoring Report

DHHS Contract No. 250-2019-00001C

Date Completed: August 22, 2025

***Prepared for:***

Minority Affairs  
Committee Meeting

Date of Meeting: September 15, 2025

***By:***

Sarah Booker, MPH  
UNOS Research Department

### Contents

<b>Executive Summary</b>	<b>2</b>
<b>Background/Purpose</b>	<b>3</b>
<b>Strategic Plan Goal or Committee Project Addressed</b>	<b>3</b>
<b>Committee Request</b>	<b>3</b>
<b>Data and Methods</b>	<b>4</b>
<b>Results</b>	<b>6</b>
<b>Pre- vs Post-Policy Comparisons</b>	<b>6</b>
Kidney Donor KDRI/KDPI by Race/Ethnicity and HCV Status . . . . .	7
Kidney Non-use Rates . . . . .	15
Kidney Transplants by KDPI/KDRI . . . . .	20
Kidney Transplants by Donor and Recipient Race/Ethnicity . . . . .	22
Kidney Transplants by Donor and Recipient HCV Status . . . . .	28
Kidney Transplants by Recipient Age . . . . .	31
Kidney Post-Transplant Outcomes . . . . .	32
<b>KDRI/KDPI Formula Comparison for Post-Policy Donors</b>	<b>34</b>
KDRI Formula Comparison for Post-Policy Donors . . . . .	35
KDPI Sequence Comparison for Post-Policy Donors . . . . .	45
<b>Conclusion</b>	<b>61</b>
<b>References</b>	<b>62</b>

## Executive Summary

On October 31, 2024, the Organ Procurement and Transplantation Network (OPTN) updated the Kidney Donor Risk Index (KDRI) and Kidney Donor Profile Index (KDPI) formula used in the allocation of deceased donor kidneys.<sup>1</sup> The OPTN Minority Affairs Committee refit the KDRI, which is used to derive KDPI, without coefficients for race and hepatitis C virus (HCV) to better reflect the likelihood of graft failure for kidneys from Black and HCV-positive (HCV+) deceased donors.

### Pre- vs Post-Policy Comparisons

In the 6 months post-implementation (October 31, 2024 - April 30, 2025), compared with the 6 months prior to implementation (May 03, 2024 - October 30, 2024):

- Median KDPI for non-Hispanic Black donors decreased from 69% to 58% post-policy, while median KDPI increased for all other racial/ethnic groups (**Figure 2** and **Table 2**).
- The proportion of non-Hispanic Black donors in the KDPI 0-20% group increased from 6.1% to 17.1% post-policy, while the proportion in the KDPI 86-100% group decreased from 24.4% to 12.3% (**Figure 1** and **Table 1**).
- Median KDPI for HCV+ donors decreased from 68% to 57% post-policy, while median KDPI for HCV-negative (HCV-) donors increased from 56% to 63% (**Figure 5** and **Table 5**).
- The proportion of HCV+ donors in the KDPI 0-20% and 21-34% groups increased from 0.6% and 4.3% to 6.9% and 11.4%, respectively, while the proportion in the KDPI 86-100% group decreased from 12.5% to 7.1% (**Figure 4** and **Table 4**).
- Non-use of kidneys from non-Hispanic Black donors decreased from 31.5% to 29.0% (**Figure 9** and **Table 9**).
- Non-use of kidneys from HCV+ donors increased from 28.5% to 31.0% (**Figure 10** and **Table 10**).
- The overall kidney non-use rate remained stable (28.9% vs 28.7%; **Table 7**).
- The proportion of transplants from HCV+ donors remained similar from pre- to post-policy (8.5% vs 8.4%; **Figure 17** and **Table 17**).
- The proportion of all transplants that were from HCV+ donors to HCV- recipients remained similar at 8.0% pre-policy vs 7.9% post-policy (**Figure 19**).

### KDRI/KDPI Formula Comparison for Post-Policy Donors

This section compares the current, race/HCV-neutral KDRI/KDPI with the original, race/HCV-inclusive KDRI/KDPI for kidney donors recovered in the post-policy era only (October 31, 2024 - April 30, 2025).

- Median KDRI for non-Hispanic Black and HCV+ donors was lower with the race/HCV-neutral formula compared to the original formula; median KDRI for non-Black and HCV- donors was similar with both versions of the KDRI formula (**Figures 22-23** and **Tables 22-23**).
- 34.4% of non-Hispanic Black donors and 47.9% of HCV+ donors were in a lower KDPI sequence with the current KDRI/KDPI formula than they would have been pre-policy (**Figures 32-33** and **Tables 31-32**).
- Overall, most (77.2%) donors post-policy remained in the same KDPI sequence with both versions of KDRI/KDPI; 11.1% were in a lower KDPI sequence with the current formula than they would have been pre-policy, and 11.7% were in a higher KDPI sequence with the current formula than they would have been pre-policy (**Figure 31**).

The OPTN Minority Affairs Committee will continue to monitor the impact of this policy. The next monitoring report will assess 1 year of data pre- and post-implementation.

## Background/Purpose

On October 31, 2024, the Organ Procurement and Transplantation Network (OPTN) updated the Kidney Donor Risk Index (KDRI) and Kidney Donor Profile Index (KDPI) formula used in the allocation of deceased donor kidneys.<sup>1</sup> This policy was sponsored by the OPTN Minority Affairs Committee.

KDPI is a measure that combines deceased donor factors including clinical parameters and demographics to summarize the likelihood of graft failure into a single number.<sup>2</sup> KDPI is derived from KDRI by mapping KDRI from a relative risk scale to a cumulative percentage scale (0-100%), where lower KDPI scores are associated with longer estimated organ function. The reference population used to map KDRI to KDPI is all deceased donors with a kidney recovered for transplant in the prior calendar year; this reference population is updated annually in accordance with OPTN policy.

In the original KDRI/KDPI model, kidneys from Black donors and Hepatitis C virus (HCV) positive donors had an increased KDPI of up to 20% for each factor. Race is a poor proxy for human genetic variation and due to innovations in treatment, post-transplant outcomes for HCV-positive (HCV+) deceased donor kidney transplants are similar to those of HCV-negative (HCV-) donor kidney transplants.

The OPTN Minority Affairs Committee refit the KDRI/KDPI formula without coefficients for donor race or HCV status to better reflect the likelihood of graft failure for kidneys from Black and HCV+ deceased donors. This report presents data describing the U.S. organ transplantation system in the 6 months after this policy was implemented (October 31, 2024 - April 30, 2025), compared with the 6 months prior to implementation (May 03, 2024 - October 30, 2024).

## Strategic Plan Goal or Committee Project Addressed

Optimize organ use.

## Committee Request

The OPTN Minority Affairs Committee considers the non-use of kidneys and transplant rates as the key metrics to assess the outcome of the change to KDPI. The following metrics will be evaluated at approximately 6 months, 1 year, and 2 years post-implementation:

- Demographics within each KDPI sequence, including race/ethnicity, HCV status, and others as needed
- Demographics of transplanted candidates, including race/ethnicity, HCV status, and others as needed
- Transplant rates by KDPI sequence, race/ethnicity, and HCV status
- Non-use of kidneys by KDPI sequence, race/ethnicity, and HCV status
- Delayed graft function by KDPI sequence
- Survival by KDPI sequence
- Others subsequently requested by the Committee

Transplant rates by KDPI sequence and HCV status could not be provided because these factors are only known after transplant and are not known for candidates on the waiting list (used to determine the denominator for transplant rates). The OPTN collects transplant recipients' HCV status at transplant on Transplant Recipient Registration (TRR) forms, but does not collect HCV status for candidates on the waiting list prior to transplant. Similarly, donor factors such as KDPI are not known for candidates who have not received a transplant. Counts and percentages of transplants by KDPI sequence and HCV status were provided instead of transplant rates.

Survival analyses will be provided only at 1 and 2 years post-implementation to allow for sufficient follow-up time.

## Data and Methods

### Data Sources

This report is based on OPTN data as of August 15, 2025. Deceased donor data were obtained from the OPTN Donor Data and Matching System and from Deceased Donor Registration (DDR) forms. Candidate data were obtained from the OPTN Waiting List and from Transplant Candidate Registration (TCR) forms. Recipient and transplant data were obtained from OPTN match runs and from TRR forms. Data are subject to change based on future data submission or correction.

### Cohort

Analyses of donors are based on deceased kidney donors recovered in the U.S. between May 03, 2024 and April 30, 2025. Analyses of transplants are based on deceased donor kidney transplants performed in the U.S. between May 03, 2024 and April 30, 2025.

Policy eras were defined as:

- Pre-policy: May 03, 2024 to October 30, 2024
- Post-policy: October 31, 2024 to April 30, 2025

### Methods

**KDRI:** KDRI is an estimate of the relative risk of post-transplant kidney graft failure (in an average, adult recipient) from a particular deceased donor compared to a reference donor. KDRI in this report is the unscaled version of KDRI, where the reference donor ( $KDRI = 1.00$ ) is the reference donor used in the original KDRI publication by Rao et al.<sup>3</sup>

KDRI values in the *Pre- vs Post-Policy Comparisons* section of this report are based on the KDRI formula used in kidney allocation at the time of donation (for donor metrics) or transplant (for recipient/transplant metrics). Pre-policy KDRI used the original KDRI formula that included factors for donor race and HCV status ("race/HCV-inclusive KDRI"). Post-policy KDRI used the race/HCV-neutral KDRI formula that was implemented on October 31, 2024.

In the *KDRI/KDPI Formula Comparison for Post-Policy Donors* section of this report, both versions of KDRI were calculated for the same post-policy cohort of donors.

**KDPI:** KDPI is derived from KDRI by mapping KDRI from a relative risk scale to a cumulative percentage scale (0-100%). The reference population used for this mapping is all deceased donors with a kidney recovered for the purpose of transplant in the prior calendar year. This reference population is updated annually by June 1 of each year in accordance with *OPTN Policy 8.4.B: Deceased Donor Classifications*.

KDPI values in the *Pre- vs Post-Policy Comparisons* section of this report are based on the KDRI formula and KDPI reference population used in kidney allocation at the time of donation/transplant. Pre-policy KDPI used the original, race/HCV-inclusive KDRI formula. Post-policy KDPI used the race/HCV-neutral KDRI formula that was implemented on October 31, 2024. The OPTN updated the reference population used to map KDRI to KDPI on May 29, 2024. This means the KDPI reference population for approximately 1 month of the pre-policy cohort was deceased kidney donors recovered in calendar year 2022, while most (approximately 5 months) of the pre-policy cohort and the entire post-policy cohort used the reference population of deceased kidney donors recovered in 2023.

In the *KDRI/KDPI Formula Comparison for Post-Policy Donors* section of this report, both versions of KDRI were calculated for the same cohort of donors, and both versions of KDRI were mapped to KDPI using the current reference population (deceased kidney donors recovered in calendar year 2024).

For more information about KDRI and KDPI, see: <https://optn.transplant.hrsa.gov/data/allocation-calculators/kdpi-calculator/learn-about-kdpi/>

**HCV status:** Donors were considered to be HCV+ if they had either a positive serologic test result or a positive nucleic acid test (NAT) result reported on the DDR. Similarly, recipients were considered to be HCV+ if they had either a positive serologic test result or a positive NAT result reported on the TRR.

**Non-use rate:** The kidney non-use rate was defined as the number of deceased donor kidneys recovered for the purpose of transplant, but not transplanted, divided by the total number of deceased donor kidneys recovered for transplant.

**Transplant rate:** Deceased donor kidney transplant rates were defined as the number of waiting list removals for deceased donor kidney transplant, divided by the total amount of active time on the waiting list for registrations ever waiting during the period. These results were presented as transplants per 100 active patient years.

**Delayed graft function:** Delayed graft function (DGF) was defined as requiring any dialysis within the first 7 days after transplant.

## Results

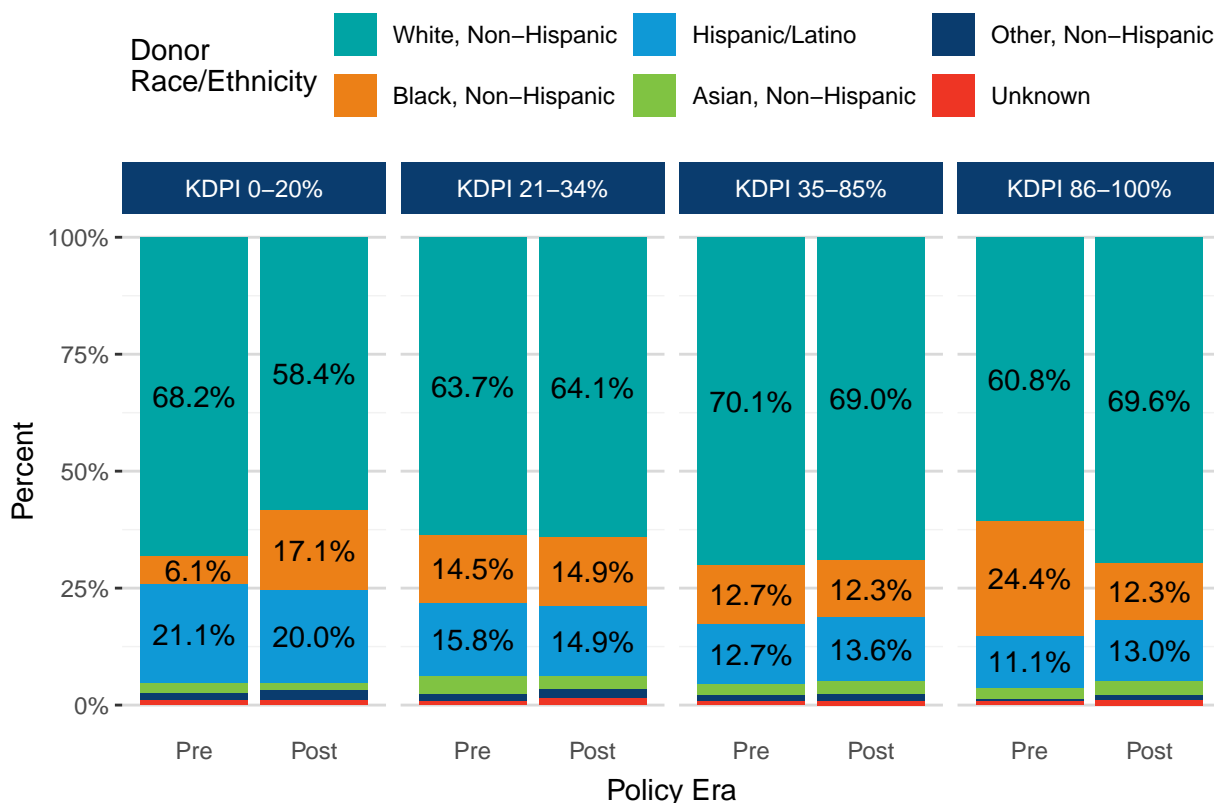
### Pre- vs Post-Policy Comparisons

This section compares deceased donor and transplant recipient demographics, kidney non-use rates, and post-transplant outcomes in the 6 months post-implementation (October 31, 2024 - April 30, 2025) versus the 6 months immediately prior to implementation (May 03, 2024 - October 30, 2024). KDRI and KDPI values in this section are based on the KDRI formula used in kidney allocation at the time of donation (for donor metrics) or transplant (for recipient/transplant metrics), and KDRI was mapped to KDPI using the reference population used in kidney allocation at the time of donation/transplant. Pre-policy KDRI/KDPI used the original KDRI formula that included factors for race and HCV status. Post-policy KDRI/KDPI used the updated KDRI formula that was refit without race and HCV. The KDPI reference population for the entire post-policy cohort and most of the pre-policy cohort consisted of deceased kidney donors recovered in 2023, although approximately 1 month of the pre-policy cohort used the reference population of deceased kidney donors recovered in 2022.

## Kidney Donor KDRI/KDPI by Race/Ethnicity and HCV Status

**Figure 1** and **Table 1** show the number and proportion of deceased kidney donors in each KDPI sequence by donor race/ethnicity and policy era. The proportion of non-Hispanic Black donors in the KDPI 0-20% group increased post-policy, while the proportion in the KDPI 86-100% group decreased.

**Figure 1. U.S. Deceased Kidney Donors by Policy Era, KDPI Sequence, and Donor Race/Ethnicity**



Note: 6 donors missing KDPI (6 pre-policy; 0 post-policy) were excluded.

**Table 1. U.S. Deceased Kidney Donors by Policy Era, KDPI Sequence, and Donor Race/Ethnicity**

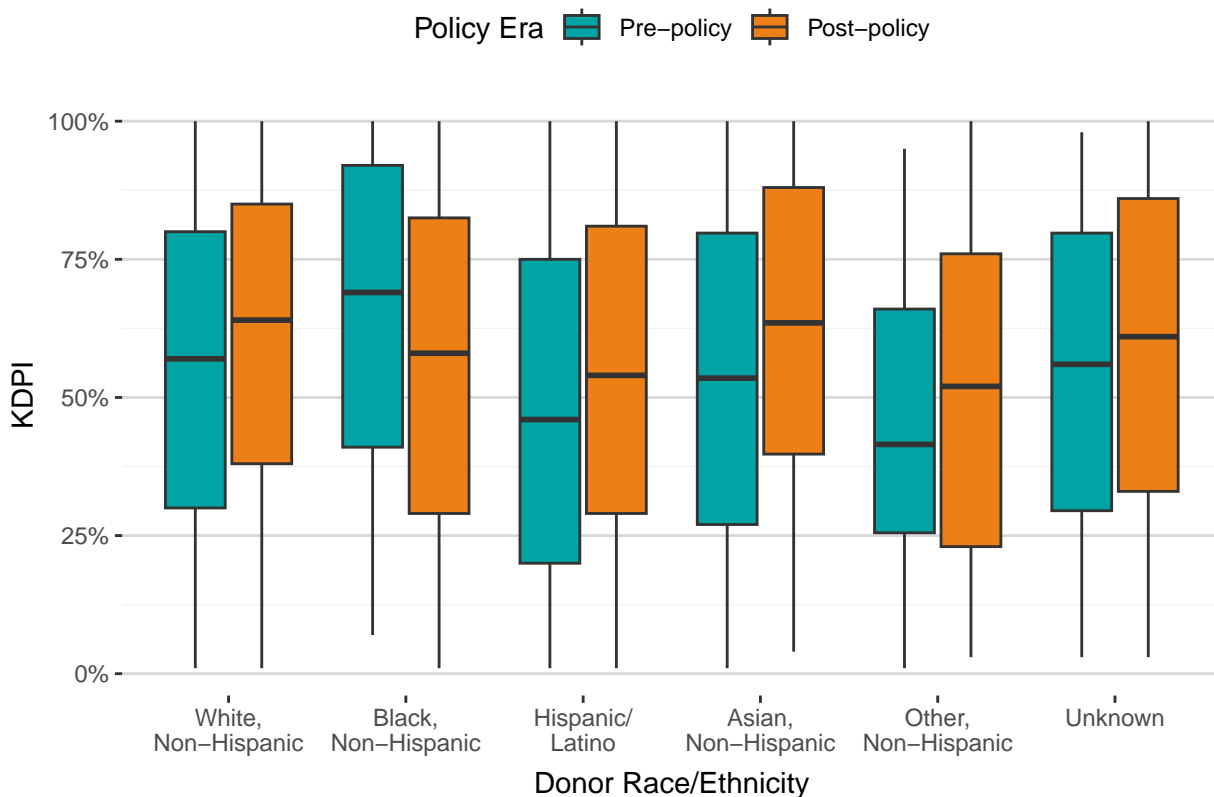
KDPI	Donor Race/Ethnicity	Pre-policy		Post-policy	
		N	Percent	N	Percent
0-20%	White, Non-Hispanic	922	68.2%	646	58.4%
	Black, Non-Hispanic	82	6.1%	189	17.1%
	Hispanic/Latino	285	21.1%	221	20.0%
	Asian, Non-Hispanic	29	2.1%	16	1.4%
	Other, Non-Hispanic	22	1.6%	25	2.3%
	Unknown	12	0.9%	10	0.9%
	Total	1,352	100%	1,107	100%
21-34%	White, Non-Hispanic	620	63.7%	530	64.1%
	Black, Non-Hispanic	141	14.5%	123	14.9%
	Hispanic/Latino	154	15.8%	123	14.9%
	Asian, Non-Hispanic	36	3.7%	23	2.8%
	Other, Non-Hispanic	16	1.6%	17	2.1%
	Unknown	7	0.7%	11	1.3%
	Total	974	100%	827	100%
35-85%	White, Non-Hispanic	2,785	70.1%	2,833	69.0%
	Black, Non-Hispanic	503	12.7%	504	12.3%
	Hispanic/Latino	506	12.7%	556	13.6%
	Asian, Non-Hispanic	92	2.3%	116	2.8%
	Other, Non-Hispanic	57	1.4%	58	1.4%
	Unknown	30	0.8%	36	0.9%
	Total	3,973	100%	4,103	100%
86-100%	White, Non-Hispanic	1,000	60.8%	1,283	69.6%
	Black, Non-Hispanic	402	24.4%	227	12.3%
	Hispanic/Latino	183	11.1%	239	13.0%
	Asian, Non-Hispanic	41	2.5%	57	3.1%
	Other, Non-Hispanic	7	0.4%	17	0.9%
	Unknown	13	0.8%	20	1.1%
	Total	1,646	100%	1,843	100%

\* Note: 6 donors missing KDPI (6 pre-policy; 0 post-policy) were excluded.



**Figure 2** and **Table 2** show the distribution of KDPI for deceased kidney donors by donor race/ethnicity and policy era. Median KDPI decreased post-policy for non-Hispanic Black donors and increased for all other racial/ethnic groups.

**Figure 2. Distribution of KDPI for U.S. Deceased Kidney Donors by Policy Era and Donor Race/Ethnicity**



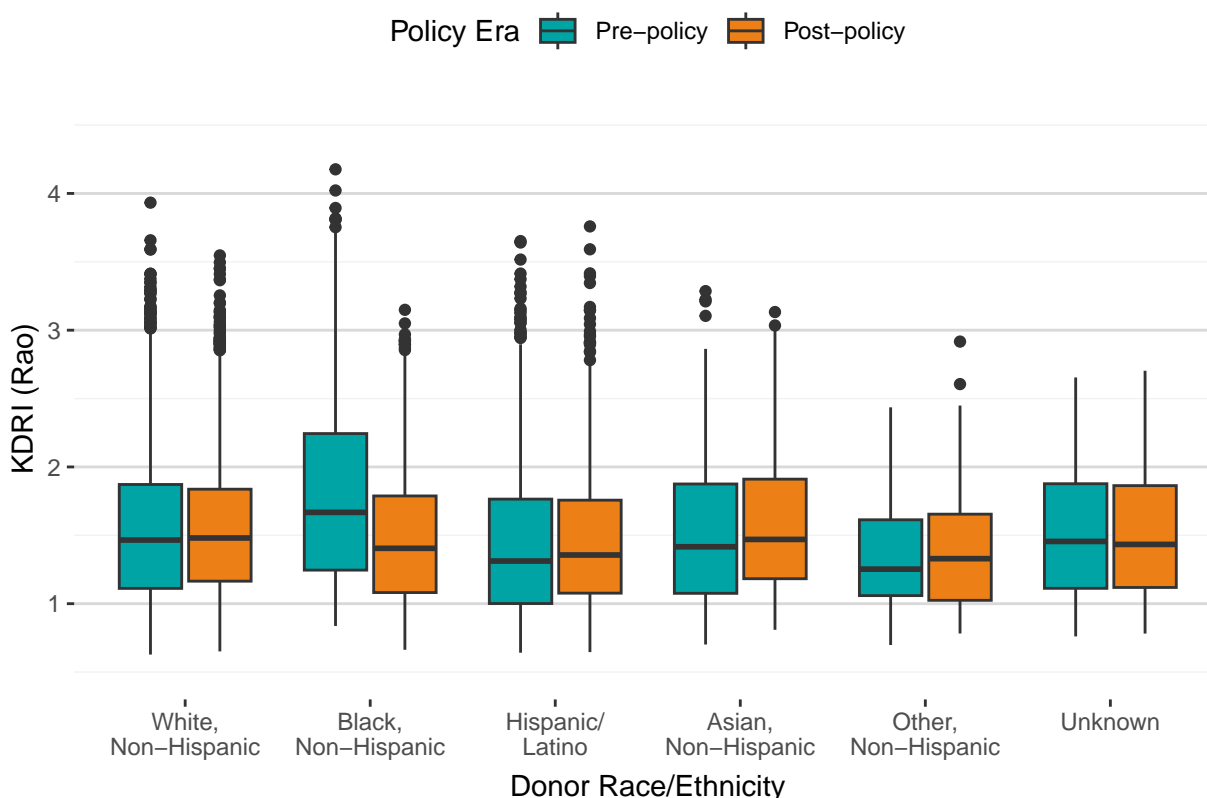
Note: 6 donors missing KDPI (6 pre-policy; 0 post-policy) were excluded.

**Table 2. Distribution of KDPI for U.S. Deceased Kidney Donors by Policy Era and Donor Race/Ethnicity**

Donor Race/Ethnicity	Policy Era	N	Missing	Min	25th Percentile	Median	75th Percentile	Max
White, Non-Hispanic	Pre-policy	5,331	4	1	30	57	80	100
	Post-policy	5,292	0	1	38	64	85	100
Black, Non-Hispanic	Pre-policy	1,129	1	7	41	69	92	100
	Post-policy	1,043	0	1	29	58	82	100
Hispanic/Latino	Pre-policy	1,129	1	1	20	46	75	100
	Post-policy	1,139	0	1	29	54	81	100
Asian, Non-Hispanic	Pre-policy	198	0	1	27	54	80	100
	Post-policy	212	0	4	40	64	88	100
Other, Non-Hispanic	Pre-policy	102	0	1	26	42	66	95
	Post-policy	117	0	3	23	52	76	100
Unknown	Pre-policy	62	0	3	30	56	80	98
	Post-policy	77	0	3	33	61	86	100

**Figure 3** and **Table 3** show the distribution of KDRI for deceased kidney donors by donor race/ethnicity and policy era. Median KDRI decreased post-policy for non-Hispanic Black donors. Median KDRI for non-Hispanic White donors was similar from pre- to post-policy, while median KDRI for Hispanic/Latino, non-Hispanic Asian, and other non-Hispanic race/ethnicities increased.

**Figure 3. Distribution of KDRI for U.S. Deceased Kidney Donors by Policy Era and Donor Race/Ethnicity**



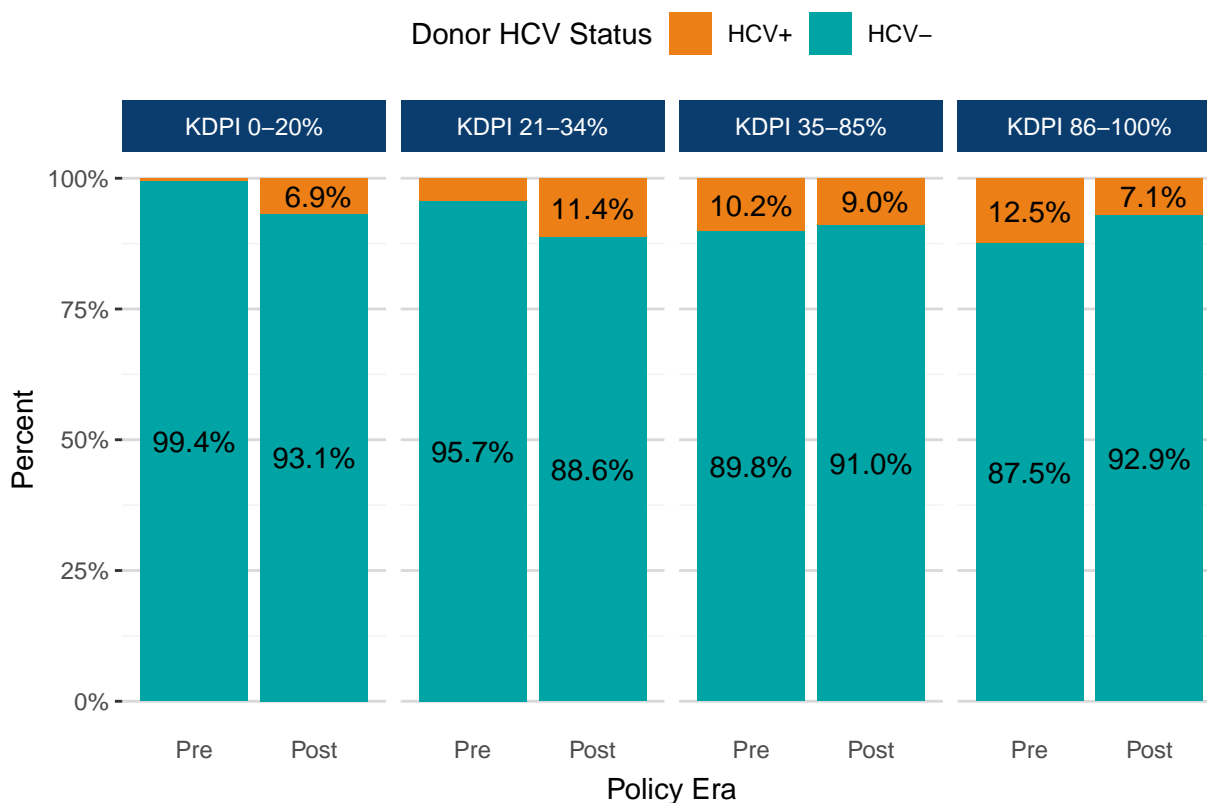
Note: 6 donors missing KDRI (6 pre-policy; 0 post-policy) were excluded.

**Table 3. Distribution of KDRI for U.S. Deceased Kidney Donors by Policy Era and Donor Race/Ethnicity**

Donor Race/Ethnicity	Policy Era	N	Missing	Min	25th Percentile	Median	75th Percentile	Max
White, Non-Hispanic	Pre-policy	5,331	4	0.63	1.11	1.47	1.87	3.93
	Post-policy	5,292	0	0.65	1.16	1.48	1.84	3.55
Black, Non-Hispanic	Pre-policy	1,129	1	0.84	1.25	1.67	2.24	4.18
	Post-policy	1,043	0	0.66	1.08	1.40	1.79	3.15
Hispanic/Latino	Pre-policy	1,129	1	0.64	1.00	1.31	1.76	3.65
	Post-policy	1,139	0	0.65	1.08	1.36	1.76	3.76
Asian, Non-Hispanic	Pre-policy	198	0	0.70	1.08	1.42	1.88	3.29
	Post-policy	212	0	0.81	1.18	1.47	1.91	3.13
Other, Non-Hispanic	Pre-policy	102	0	0.70	1.06	1.25	1.61	2.44
	Post-policy	117	0	0.78	1.02	1.33	1.65	2.92
Unknown	Pre-policy	62	0	0.76	1.11	1.46	1.88	2.65
	Post-policy	77	0	0.78	1.12	1.43	1.86	2.70

**Figure 4** and **Table 4** show the number and proportion of deceased kidney donors in each KDPI sequence by donor HCV status and policy era. The proportion of HCV+ donors in the KDPI 0-20% and 21-34% groups increased post-policy, while the proportion in the KDPI 35-85% and 86-100% groups decreased.

**Figure 4. U.S. Deceased Kidney Donors by Policy Era, KDPI Sequence, and Donor HCV Status**



Note: 6 donors missing KDPI (6 pre-policy; 0 post-policy) were excluded.

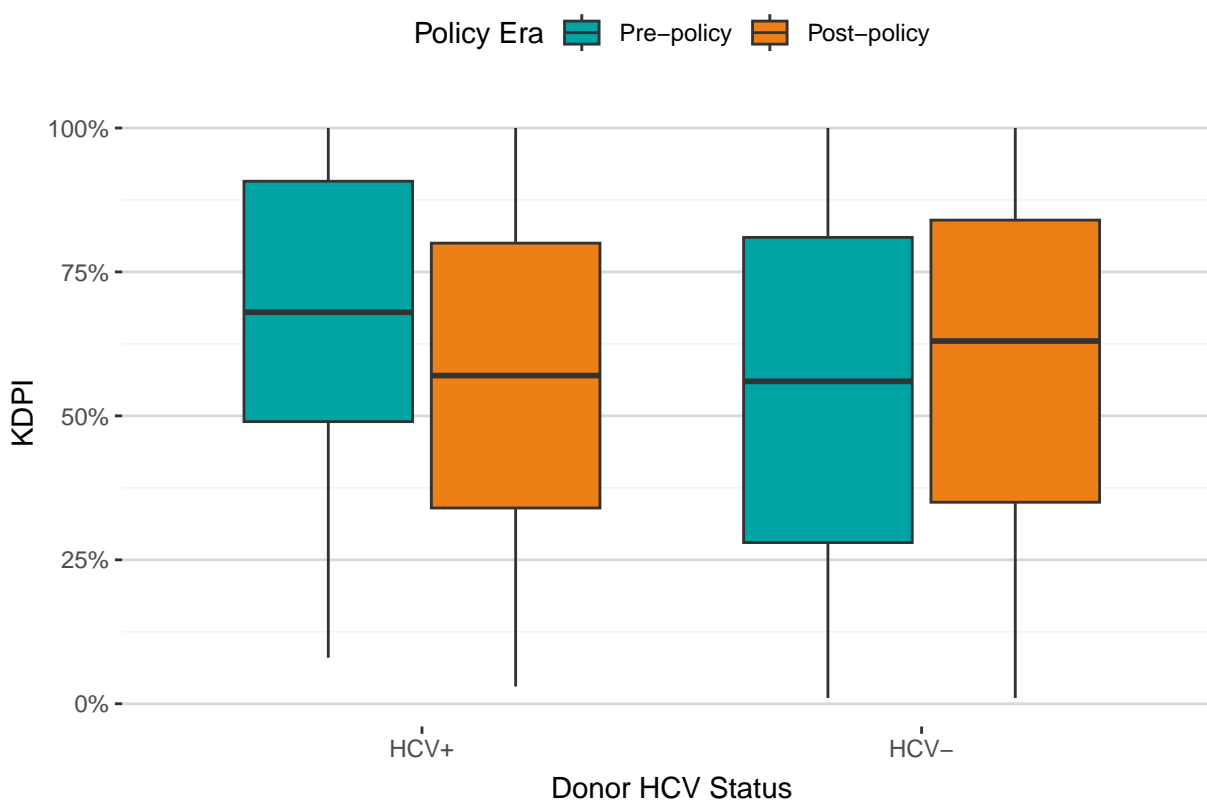
**Table 4. U.S. Deceased Kidney Donors by Policy Era, KDPI Sequence, and Donor HCV Status**

KDPI	Donor HCV Status	Pre-policy		Post-policy	
		N	Percent	N	Percent
0-20%	HCV+	8	0.6%	76	6.9%
	HCV-	1,344	99.4%	1,031	93.1%
	Total	1,352	100%	1,107	100%
21-34%	HCV+	42	4.3%	94	11.4%
	HCV-	932	95.7%	733	88.6%
	Total	974	100%	827	100%
35-85%	HCV+	406	10.2%	370	9.0%
	HCV-	3,567	89.8%	3,733	91.0%
	Total	3,973	100%	4,103	100%
86-100%	HCV+	206	12.5%	131	7.1%
	HCV-	1,440	87.5%	1,712	92.9%
	Total	1,646	100%	1,843	100%

\* Note: 6 donors missing KDPI (6 pre-policy; 0 post-policy) were excluded.

**Figure 5** and **Table 5** show the distribution of KDPI for deceased kidney donors by donor HCV status and policy era. Median KDPI decreased post-policy for HCV+ donors and increased for HCV- donors.

**Figure 5. Distribution of KDPI for U.S. Deceased Kidney Donors by Policy Era and Donor HCV Status**



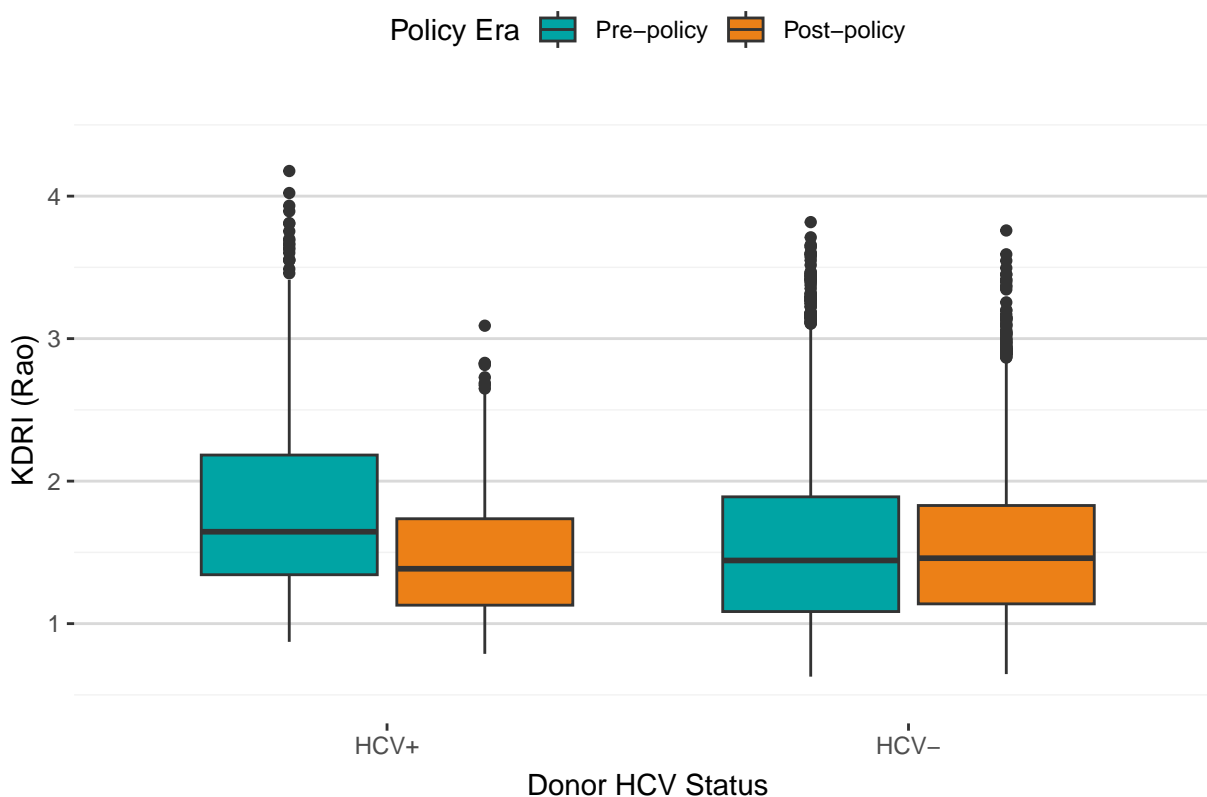
Note: 6 donors missing KDPI (6 pre-policy; 0 post-policy) were excluded.

**Table 5. Distribution of KDPI for U.S. Deceased Kidney Donors by Policy Era and Donor HCV Status**

Donor HCV Status	Policy Era	N	Missing	Min	25th Percentile	Median	75th Percentile	Max
HCV+	Pre-policy	662	0	8	49	68	91	100
	Post-policy	671	0	3	34	57	80	100
HCV-	Pre-policy	7,289	6	1	28	56	81	100
	Post-policy	7,209	0	1	35	63	84	100

**Figure 6** and **Table 6** show the distribution of KDRI for deceased kidney donors by donor HCV status and policy era. Median KDRI decreased post-policy for HCV+ donors. Median KDRI for HCV- donors was similar from pre- to post-policy.

**Figure 6. Distribution of KDRI for U.S. Deceased Kidney Donors by Policy Era and Donor HCV Status**



Note: 6 donors missing KDRI (6 pre-policy; 0 post-policy) were excluded.

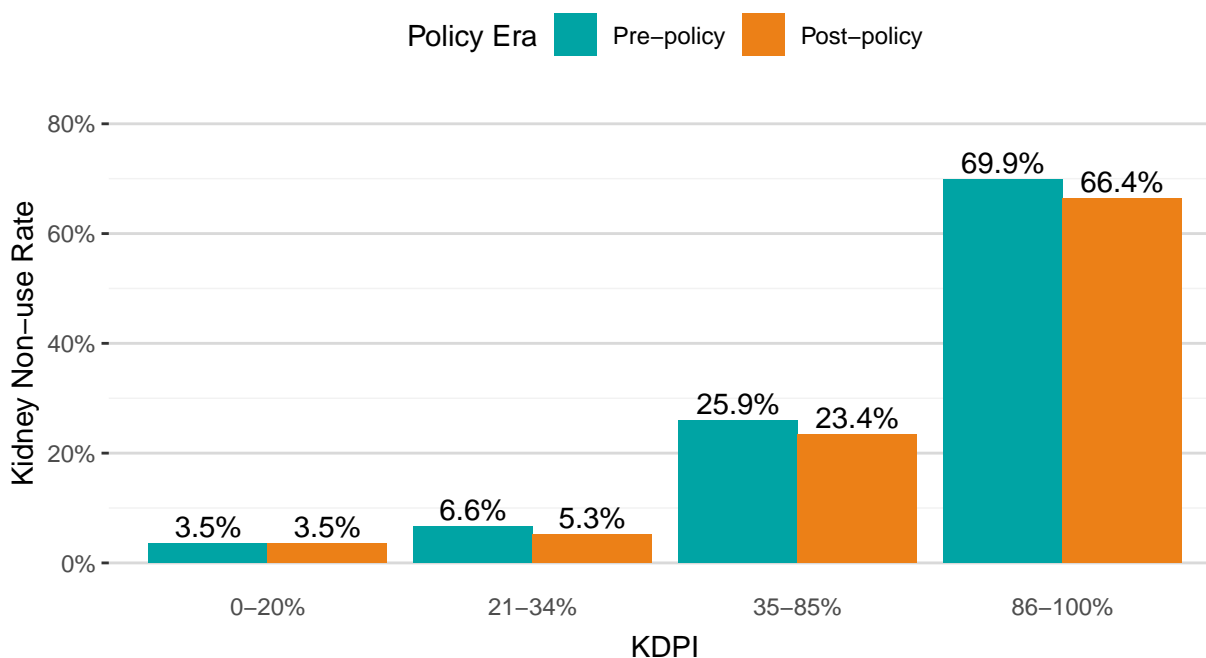
**Table 6. Distribution of KDRI for U.S. Deceased Kidney Donors by Policy Era and Donor HCV Status**

Donor HCV Status	Policy Era	N	Missing	Min	25th Percentile	Median	75th Percentile	Max
HCV+	Pre-policy	662	0	0.87	1.34	1.64	2.18	4.18
	Post-policy	671	0	0.79	1.13	1.39	1.74	3.09
HCV-	Pre-policy	7,289	6	0.63	1.08	1.44	1.89	3.82
	Post-policy	7,209	0	0.65	1.14	1.46	1.83	3.76

## Kidney Non-use Rates

**Figure 7** and **Table 7** show deceased donor kidney non-use rates by KDPI and policy era. The overall kidney non-use rate remained similar at 28.9% pre-policy and 28.7% post-policy. The non-use rate for kidneys with KDPI 0-20% remained low at 3.5% while non-use rates decreased post-policy for KDPI 21-34%, 35-85%, and 86-100% kidneys.

**Figure 7. U.S. Deceased Donor Kidney Non-use Rates by Policy Era and KDPI**



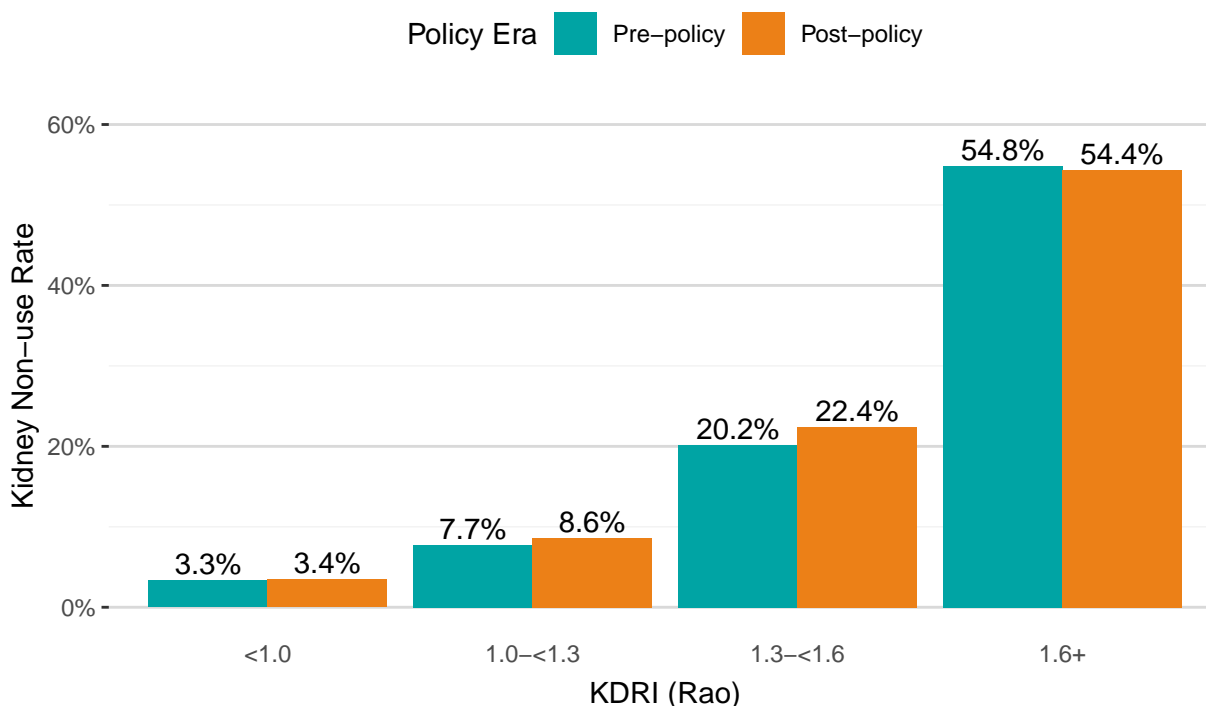
Note: 6 donors missing KDPI (6 pre-policy; 0 post-policy) were excluded.

**Table 7. U.S. Deceased Donor Kidney Non-use Rates by Policy Era and KDPI**

KDPI	Policy Era	N Kidneys Recovered	N Kidneys Transplanted	N Kidneys Recovered but not Transplanted	Non-use Rate
0-20%	Pre-policy	2,698	2,603	95	3.5%
	Post-policy	2,207	2,130	77	3.5%
21-34%	Pre-policy	1,942	1,814	128	6.6%
	Post-policy	1,647	1,560	87	5.3%
35-85%	Pre-policy	7,888	5,843	2,045	25.9%
	Post-policy	8,165	6,254	1,911	23.4%
86-100%	Pre-policy	3,267	983	2,284	69.9%
	Post-policy	3,661	1,230	2,431	66.4%
Overall	Pre-policy	15,807	11,243	4,564	28.9%
	Post-policy	15,680	11,174	4,506	28.7%

**Figure 8** and **Table 8** show deceased donor kidney non-use rates by KDRI and policy era. The kidney non-use rate for kidneys with KDRI <1.0 remained similar from pre- to post-policy. Non-use rates for kidneys with KDRI 1.0-<1.3 and 1.3-<1.6 increased post-policy, while the non-use rate for KDRI 1.6+ kidneys decreased slightly.

**Figure 8. U.S. Deceased Donor Kidney Non-use Rates by Policy Era and KDRI**



Note: 6 donors missing KDRI (6 pre-policy; 0 post-policy) were excluded.

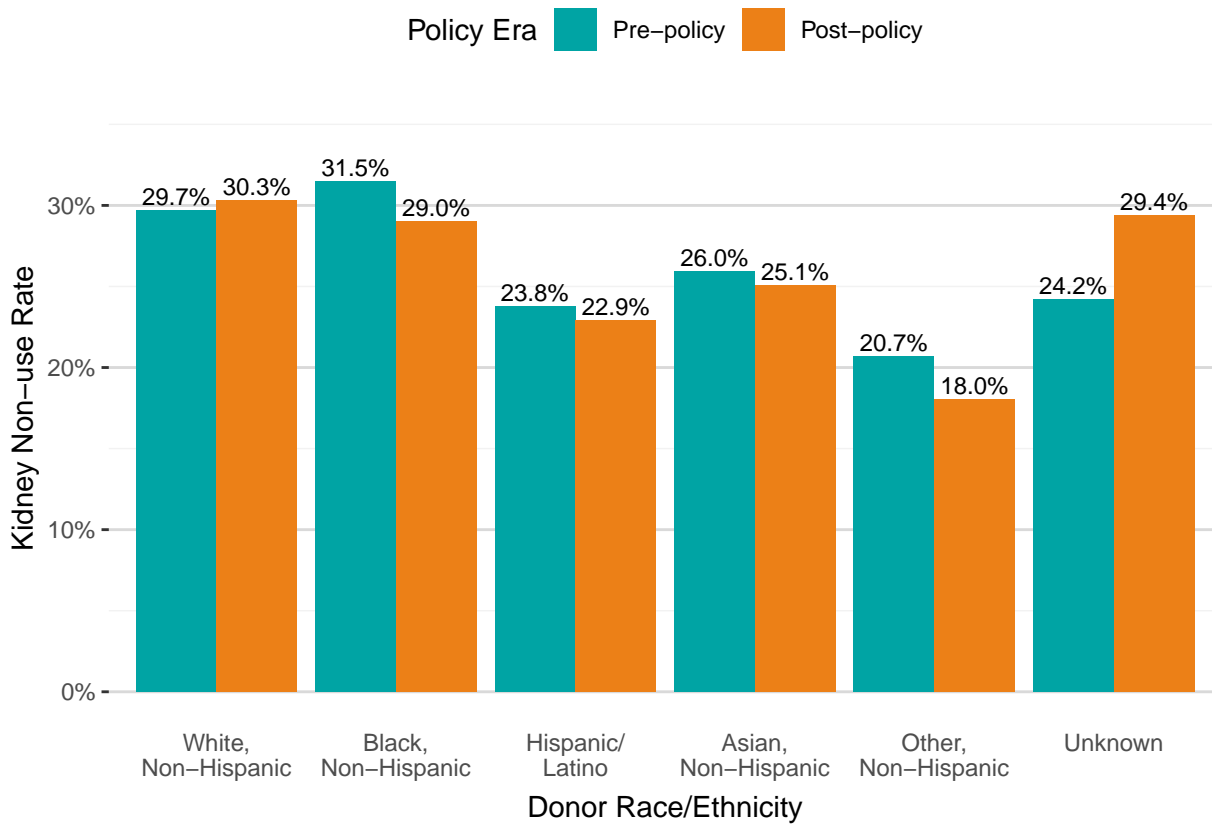
**Table 8. U.S. Deceased Donor Kidney Non-use Rates by Policy Era and KDRI**

KDRI (Rao)	Policy Era	N Kidneys Recovered	N Kidneys Transplanted	N Kidneys Recovered but not Transplanted	Non-use Rate
<1.0	Pre-policy	2,668	2,580	88	3.3%
	Post-policy	2,152	2,078	74	3.4%
1.0-<1.3	Pre-policy	3,464	3,196	268	7.7%
	Post-policy	3,905	3,570	335	8.6%
1.3-<1.6	Pre-policy	3,185	2,542	643	20.2%
	Post-policy	3,544	2,751	793	22.4%
1.6+	Pre-policy	6,478	2,925	3,553	54.8%
	Post-policy	6,079	2,775	3,304	54.4%
Overall	Pre-policy	15,807	11,243	4,564	28.9%
	Post-policy	15,680	11,174	4,506	28.7%



**Figure 9** and **Table 9** show deceased donor kidney non-use rates by donor race/ethnicity and policy era. Non-use of kidneys from non-Hispanic Black donors decreased from 31.5% to 29.0% post-policy.

**Figure 9. U.S. Deceased Donor Kidney Non-use Rates by Policy Era and Donor Race/Ethnicity**

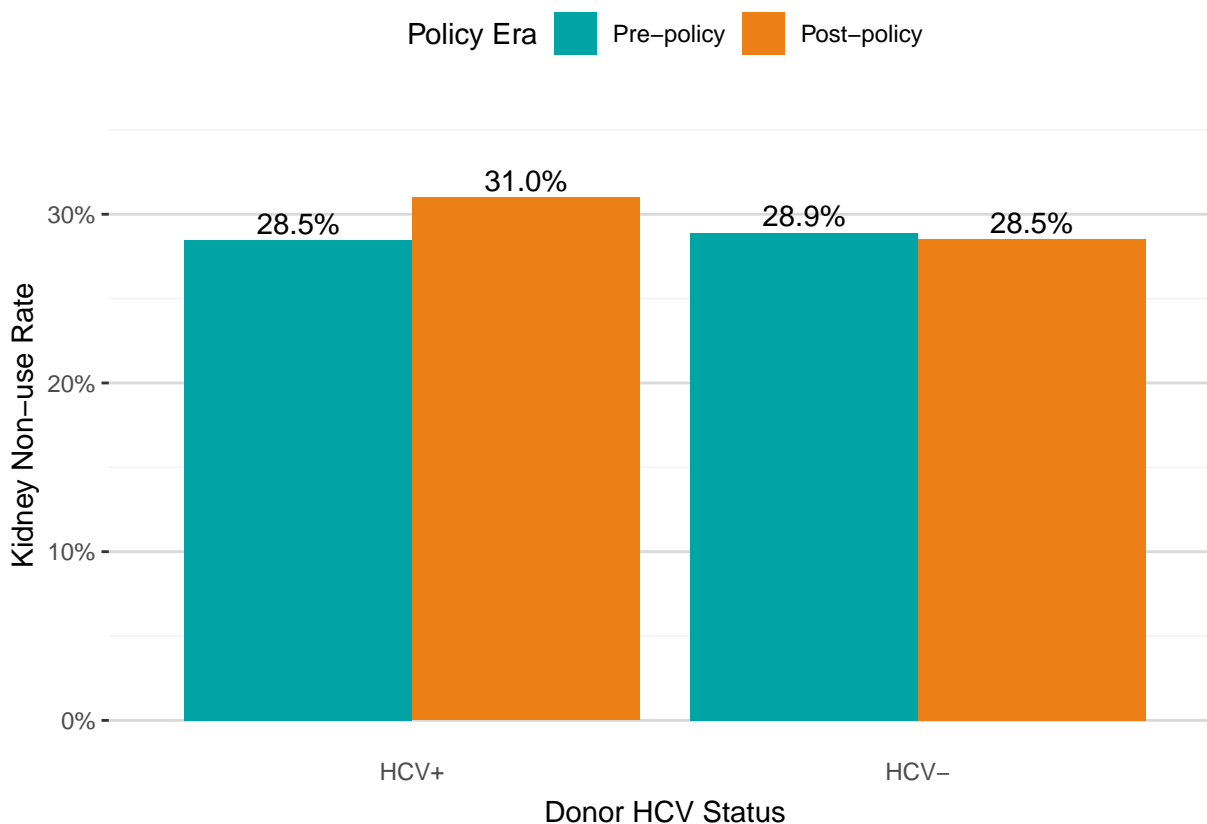


**Table 9. U.S. Deceased Donor Kidney Non-use Rates by Policy Era and Donor Race/Ethnicity**

Donor Race/Ethnicity	Policy Era	N Kidneys Recovered	N Kidneys Transplanted	N Kidneys Recovered but not Transplanted	Non-use Rate
White, Non-Hispanic	Pre-policy	10,599	7,450	3,149	29.7%
	Post-policy	10,525	7,334	3,191	30.3%
Black, Non-Hispanic	Pre-policy	2,245	1,538	707	31.5%
	Post-policy	2,075	1,473	602	29.0%
Hispanic/Latino	Pre-policy	2,243	1,709	534	23.8%
	Post-policy	2,271	1,751	520	22.9%
Asian, Non-Hispanic	Pre-policy	393	291	102	26.0%
	Post-policy	423	317	106	25.1%
Other, Non-Hispanic	Pre-policy	203	161	42	20.7%
	Post-policy	233	191	42	18.0%
Unknown	Pre-policy	124	94	30	24.2%
	Post-policy	153	108	45	29.4%

**Figure 10** and **Table 10** show deceased donor kidney non-use rates by donor HCV status and policy era. Non-use of kidneys from HCV+ donors increased from 28.5% to 31.0% post-policy, while non-use of HCV- kidneys decreased slightly.

**Figure 10. U.S. Deceased Donor Kidney Non-use Rates by Policy Era and Donor HCV Status**



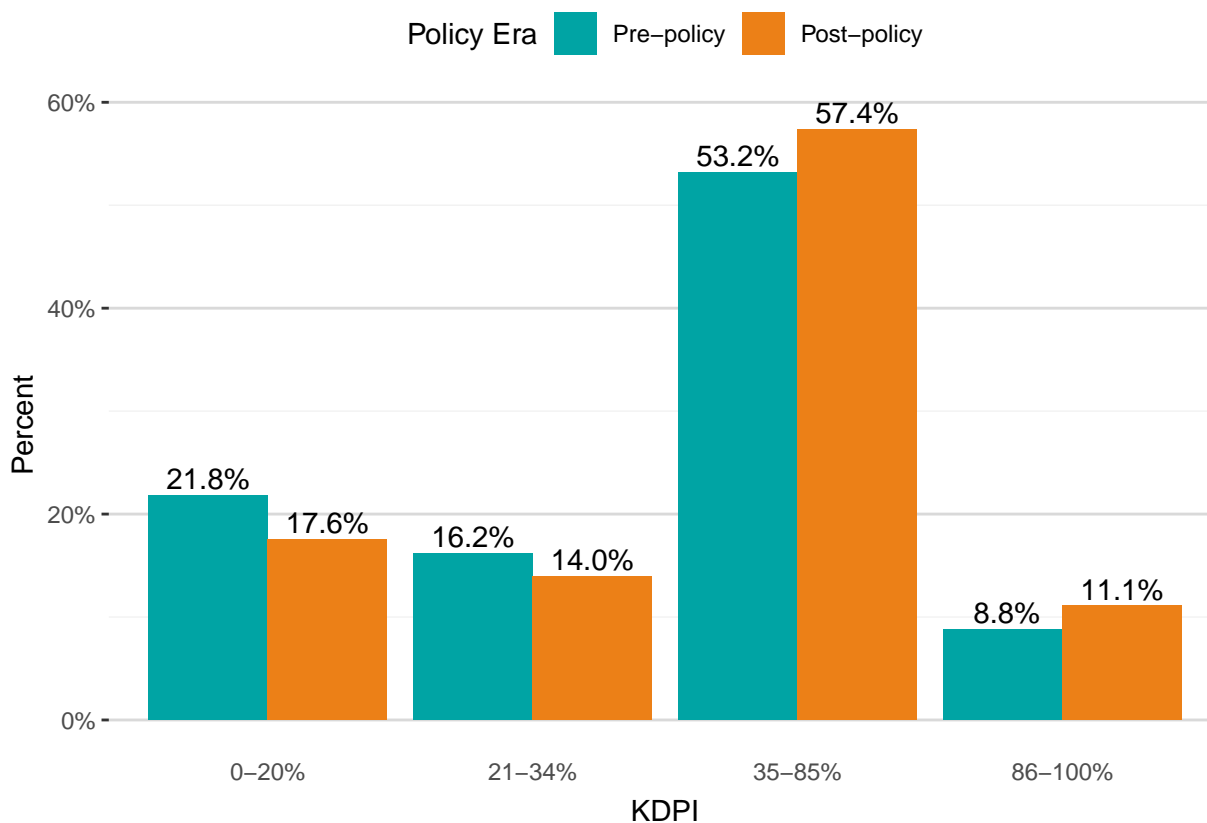
**Table 10. U.S. Deceased Donor Kidney Non-use Rates by Policy Era and Donor HCV Status**

Donor HCV Status	Policy Era	N Kidneys Recovered	N Kidneys Transplanted	N Kidneys Recovered but not Transplanted	Non-use Rate
HCV+	Pre-policy	1,317	942	375	28.5%
	Post-policy	1,339	924	415	31.0%
HCV-	Pre-policy	14,490	10,301	4,189	28.9%
	Post-policy	14,341	10,250	4,091	28.5%

## Kidney Transplants by KDPI/KDRI

**Figure 11** and **Table 11** show the number and proportion of deceased donor kidney transplants by KDPI sequence and policy era. The proportion of transplants from donors in the KDPI 0-20% and 21-34% groups decreased post-policy, while the proportion of transplants from donors in the KDPI 35-85% and 86-100% groups increased.

**Figure 11. Deceased Donor Kidney Transplants by Policy Era and KDPI Sequence**

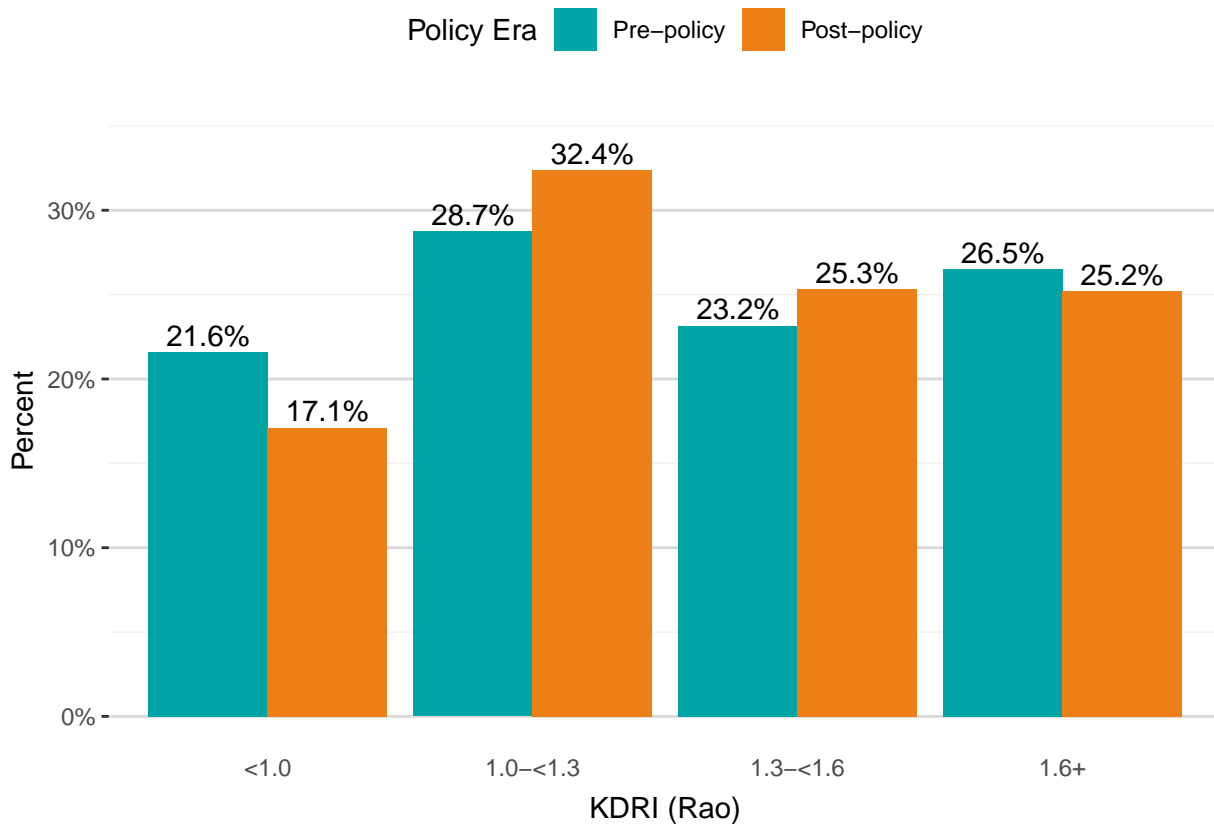


**Table 11. Deceased Donor Kidney Transplants by Policy Era and KDPI Sequence**

KDPI	Pre-policy		Post-policy	
	N	Percent	N	Percent
0-20%	2,323	21.8%	1,874	17.6%
21-34%	1,726	16.2%	1,491	14.0%
35-85%	5,674	53.2%	6,116	57.4%
86-100%	942	8.8%	1,182	11.1%
Total	10,665	100%	10,663	100%

**Figure 12** and **Table 12** show the number and proportion of deceased donor kidney transplants by KDRI and policy era. The proportion of transplants from donors with KDRI 1.0–<1.3 and 1.3–<1.6 increased post-policy, while the proportion of transplants from donors with KDRI <1.0 and 1.6+ decreased.

**Figure 12. Deceased Donor Kidney Transplants by Policy Era and KDRI**



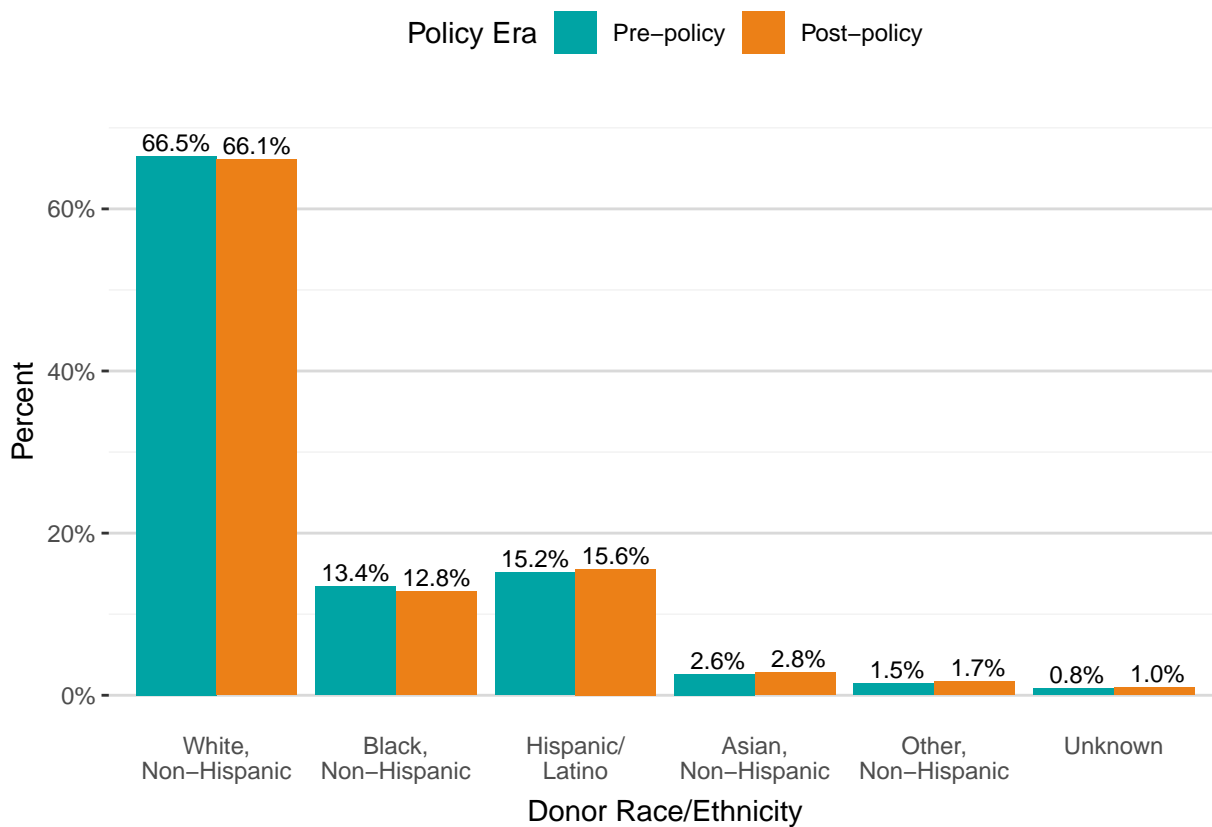
**Table 12. Deceased Donor Kidney Transplants by Policy Era and KDRI**

KDRI (Rao)	Pre-policy		Post-policy	
	N	Percent	N	Percent
<1.0	2,301	21.6%	1,825	17.1%
1.0–<1.3	3,065	28.7%	3,451	32.4%
1.3–<1.6	2,470	23.2%	2,700	25.3%
1.6+	2,829	26.5%	2,687	25.2%
Total	10,665	100%	10,663	100%

## Kidney Transplants by Donor and Recipient Race/Ethnicity

**Figure 13** and **Table 13** show the number and proportion of deceased donor kidney transplants by donor race/ethnicity and policy era. The distribution of transplants by donor race/ethnicity remained similar from pre- to post-policy.

**Figure 13. Deceased Donor Kidney Transplants by Policy Era and Donor Race/Ethnicity**

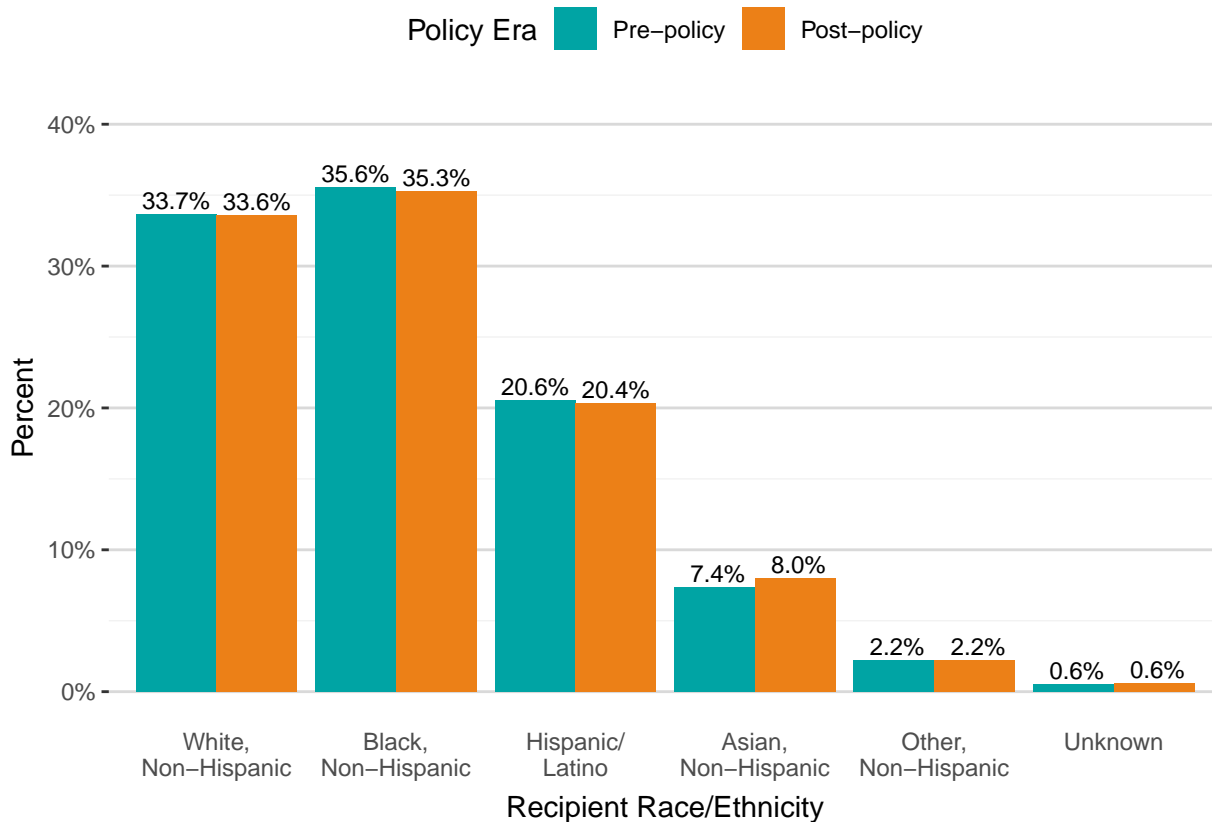


**Table 13. Deceased Donor Kidney Transplants by Policy Era and Donor Race/Ethnicity**

Donor Race/Ethnicity	Pre-policy		Post-policy	
	N	Percent	N	Percent
White, Non-Hispanic	7,097	66.5%	7,048	66.1%
Black, Non-Hispanic	1,431	13.4%	1,368	12.8%
Hispanic/Latino	1,616	15.2%	1,662	15.6%
Asian, Non-Hispanic	277	2.6%	300	2.8%
Other, Non-Hispanic	155	1.5%	181	1.7%
Unknown	89	0.8%	104	1.0%
Total	10,665	100%	10,663	100%

**Figure 14** and **Table 14** show the number and proportion of deceased donor kidney transplants by recipient race/ethnicity and policy era. There was little change in the distribution of recipient race/ethnicity from pre- to post-policy.

**Figure 14. Deceased Donor Kidney Transplants by Policy Era and Recipient Race/Ethnicity**



**Table 14. Deceased Donor Kidney Transplants by Policy Era and Recipient Race/Ethnicity**

Recipient Race/Ethnicity	Pre-policy		Post-policy	
	N	Percent	N	Percent
White, Non-Hispanic	3,593	33.7%	3,581	33.6%
Black, Non-Hispanic	3,794	35.6%	3,760	35.3%
Hispanic/Latino	2,193	20.6%	2,170	20.4%
Asian, Non-Hispanic	786	7.4%	850	8.0%
Other, Non-Hispanic	239	2.2%	238	2.2%
Unknown	60	0.6%	64	0.6%
Total	10,665	100%	10,663	100%

**Figure 15** and **Table 15** show the proportion of deceased donor kidney transplants within each policy era by donor and recipient race/ethnicity. In the figure, the denominator for the percentages is all deceased donor kidney transplants in the policy era; in the table, the denominator is the number of transplants within each donor racial/ethnic group.

The proportion of transplants from non-Hispanic Black donors to non-Hispanic Black recipients remained similar post-policy: 6.5% of all transplants pre-policy and 6.4% of all transplants post-policy were from non-Hispanic Black donors to non-Hispanic Black recipients (**Figure 15**). Approximately half of all transplants from non-Hispanic Black donors went to non-Hispanic Black recipients both pre- and post-policy (48.1% vs 49.6%; **Table 15**).

**Figure 15. Deceased Donor Kidney Transplants by Policy Era, Donor Race/Ethnicity, and Recipient Race/Ethnicity**

		Pre-policy						Post-policy					
Donor Race/Ethnicity	Unknown	0.3%	0.3%	0.2%	0.1%	0.0%	0.0%	0.2%	0.3%	0.3%	0.1%	0.0%	0.0%
	Other, Non-Hispanic	0.4%	0.3%	0.4%	0.2%	0.1%	0.0%	0.4%	0.3%	0.6%	0.3%	0.2%	0.0%
	Asian, Non-Hispanic	0.5%	0.9%	0.5%	0.5%	0.1%	0.0%	0.6%	0.9%	0.6%	0.5%	0.1%	0.0%
	Hispanic/Latino	3.6%	3.9%	6.0%	1.2%	0.4%	0.1%	3.8%	4.2%	5.7%	1.3%	0.4%	0.1%
	Black, Non-Hispanic	3.7%	6.5%	2.0%	1.0%	0.3%	0.1%	3.2%	6.4%	2.1%	0.9%	0.1%	0.1%
	White, Non-Hispanic	25.3%	23.7%	11.5%	4.4%	1.4%	0.4%	25.2%	23.2%	11.1%	4.7%	1.4%	0.4%
		White, Non-Hispanic	Black, Non-Hispanic	Hispanic/Latino	Asian, Non-Hispanic	Other, Non-Hispanic	Unknown	White, Non-Hispanic	Black, Non-Hispanic	Hispanic/Latino	Asian, Non-Hispanic	Other, Non-Hispanic	Unknown
		Recipient Race/Ethnicity											

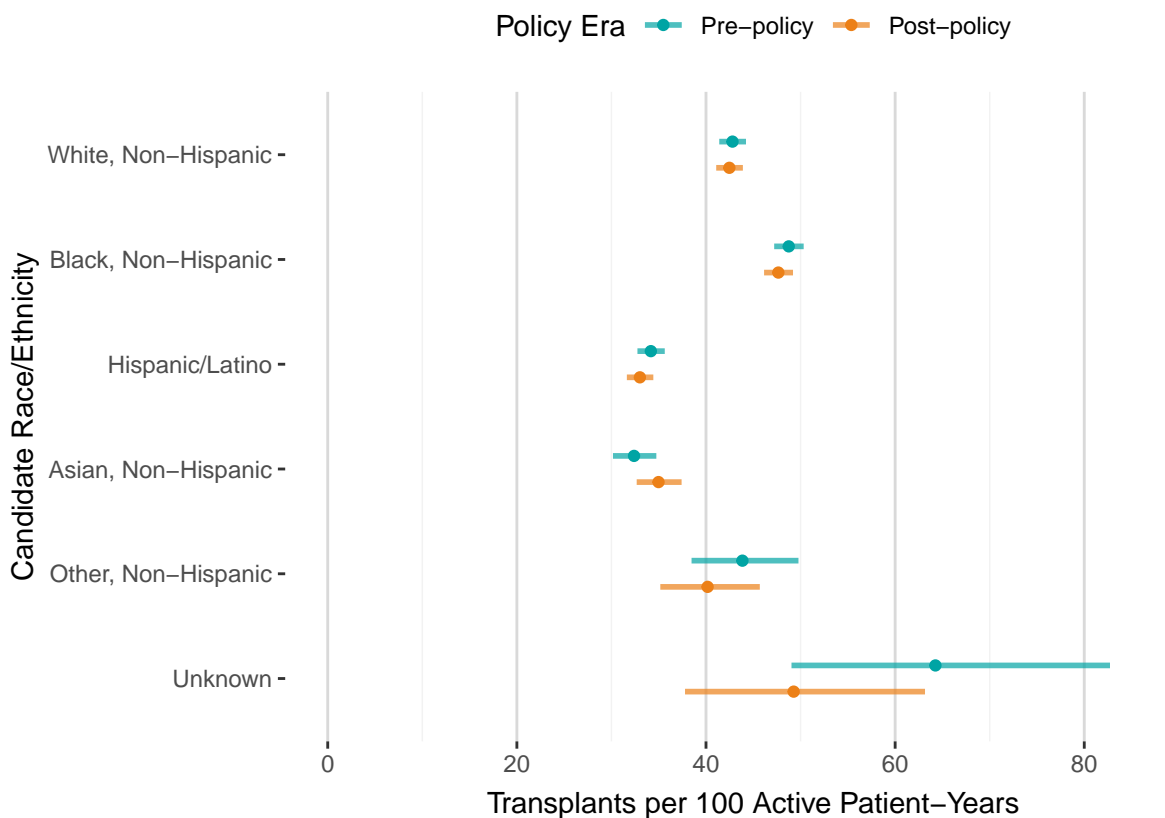


**Table 15. Deceased Donor Kidney Transplants by Policy Era, Donor Race/Ethnicity, and Recipient Race/Ethnicity**

Donor Race/Ethnicity	Recipient Race/Ethnicity	Pre-policy		Post-policy	
		N	Percent	N	Percent
White, Non-Hispanic	White, Non-Hispanic	2,693	37.9%	2,687	38.1%
	Black, Non-Hispanic	2,525	35.6%	2,477	35.1%
	Hispanic/Latino	1,225	17.3%	1,187	16.8%
	Asian, Non-Hispanic	464	6.5%	506	7.2%
	Other, Non-Hispanic	148	2.1%	153	2.2%
	Unknown	42	0.6%	38	0.5%
Black, Non-Hispanic	White, Non-Hispanic	391	27.3%	345	25.2%
	Black, Non-Hispanic	688	48.1%	678	49.6%
	Hispanic/Latino	212	14.8%	219	16.0%
	Asian, Non-Hispanic	106	7.4%	101	7.4%
	Other, Non-Hispanic	27	1.9%	15	1.1%
	Unknown	7	0.5%	10	0.7%
Hispanic/Latino	White, Non-Hispanic	380	23.5%	410	24.7%
	Black, Non-Hispanic	421	26.1%	450	27.1%
	Hispanic/Latino	644	39.9%	606	36.5%
	Asian, Non-Hispanic	125	7.7%	143	8.6%
	Other, Non-Hispanic	38	2.4%	39	2.3%
	Unknown	8	0.5%	14	0.8%
Asian, Non-Hispanic	White, Non-Hispanic	51	18.4%	69	23.0%
	Black, Non-Hispanic	97	35.0%	91	30.3%
	Hispanic/Latino	57	20.6%	68	22.7%
	Asian, Non-Hispanic	58	20.9%	58	19.3%
	Other, Non-Hispanic	12	4.3%	12	4.0%
	Unknown	2	0.7%	2	0.7%
Other, Non-Hispanic	White, Non-Hispanic	45	29.0%	44	24.3%
	Black, Non-Hispanic	31	20.0%	29	16.0%
	Hispanic/Latino	38	24.5%	60	33.1%
	Asian, Non-Hispanic	26	16.8%	32	17.7%
	Other, Non-Hispanic	14	9.0%	16	8.8%
	Unknown	1	0.6%	0	0.0%
Unknown	White, Non-Hispanic	33	37.1%	26	25.0%
	Black, Non-Hispanic	32	36.0%	35	33.7%
	Hispanic/Latino	17	19.1%	30	28.8%
	Asian, Non-Hispanic	7	7.9%	10	9.6%
	Other, Non-Hispanic	0	0.0%	3	2.9%
	Unknown	0	0.0%	0	0.0%

**Figure 16** and **Table 16** show deceased donor kidney transplant rates by candidate race/ethnicity and policy era. There were no statistically significant differences in transplant rates within racial/ethnic groups from pre- to post-policy.

**Figure 16. Deceased Donor Kidney Transplant Rates by Policy Era and Candidate Race/Ethnicity**



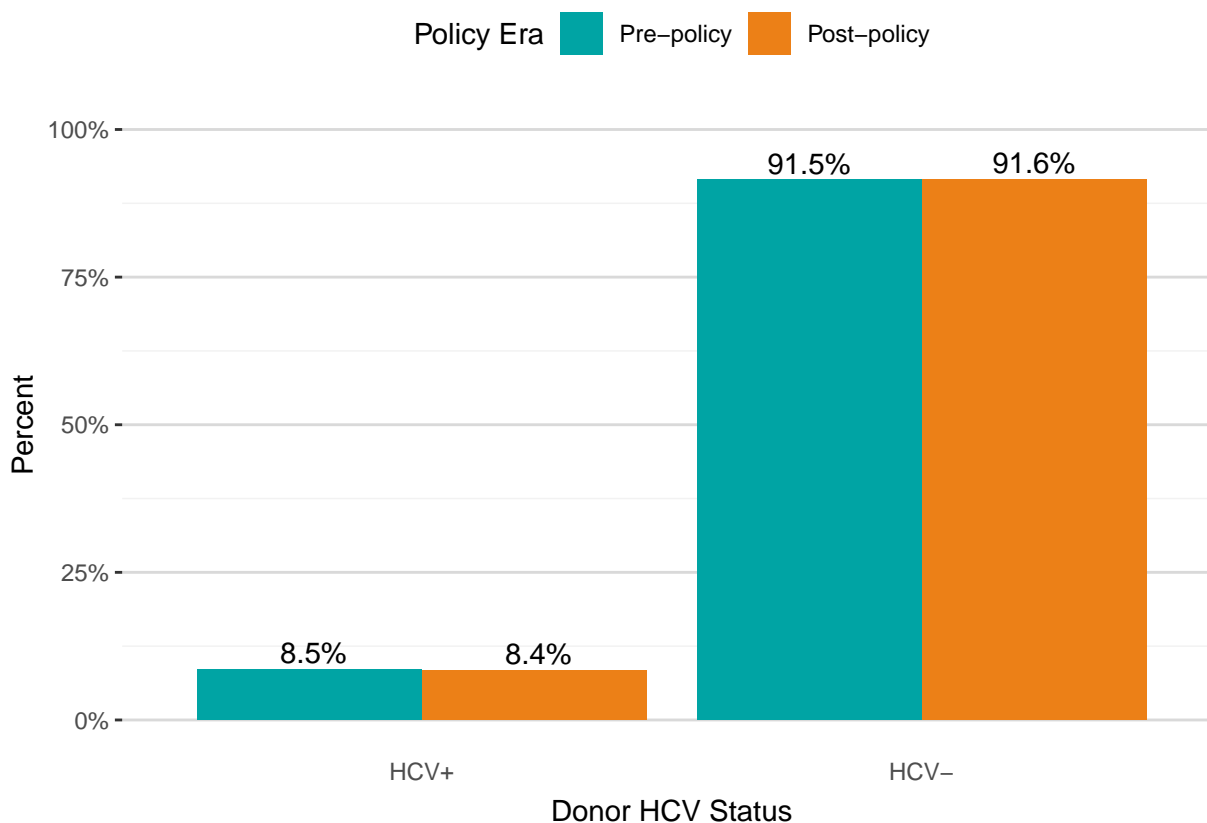
**Table 16. Deceased Donor Kidney Transplant Rates by Policy Era and Candidate Race/Ethnicity**

Candidate Race/Ethnicity	Policy Era	Registrations	Patient-Years	Transplants	Transplants per 100 Active Patient-Years	95% Confidence Interval
White, Non-Hispanic	Pre-policy	26,316	8,266.92	3,538	42.80	(41.4, 44.23)
	Post-policy	26,316	8,290.80	3,521	42.47	(41.08, 43.9)
Black, Non-Hispanic	Pre-policy	23,863	7,749.58	3,778	48.75	(47.21, 50.33)
	Post-policy	24,190	7,851.00	3,741	47.65	(46.14, 49.2)
Hispanic/Latino	Pre-policy	18,141	6,350.19	2,170	34.17	(32.75, 35.64)
	Post-policy	18,566	6,534.76	2,157	33.01	(31.63, 34.43)
Asian, Non-Hispanic	Pre-policy	6,778	2,407.89	780	32.39	(30.16, 34.75)
	Post-policy	6,820	2,421.07	847	34.98	(32.67, 37.42)
Other, Non-Hispanic	Pre-policy	1,667	544.99	239	43.85	(38.47, 49.78)
	Post-policy	1,760	577.52	232	40.17	(35.17, 45.69)
Unknown	Pre-policy	345	93.37	60	64.26	(49.04, 82.72)
	Post-policy	436	125.83	62	49.27	(37.78, 63.16)
Overall	Pre-policy	77,110	25,412.93	10,565	41.57	(40.78, 42.37)
	Post-policy	78,088	25,800.97	10,560	40.93	(40.15, 41.72)

## Kidney Transplants by Donor and Recipient HCV Status

**Figure 17** and **Table 17** show the number and proportion of deceased donor kidney transplants by donor HCV status and policy era. There was little change in the proportion of transplants by donor HCV status from pre- to post-policy.

**Figure 17. Deceased Donor Kidney Transplants by Policy Era and Donor HCV Status**

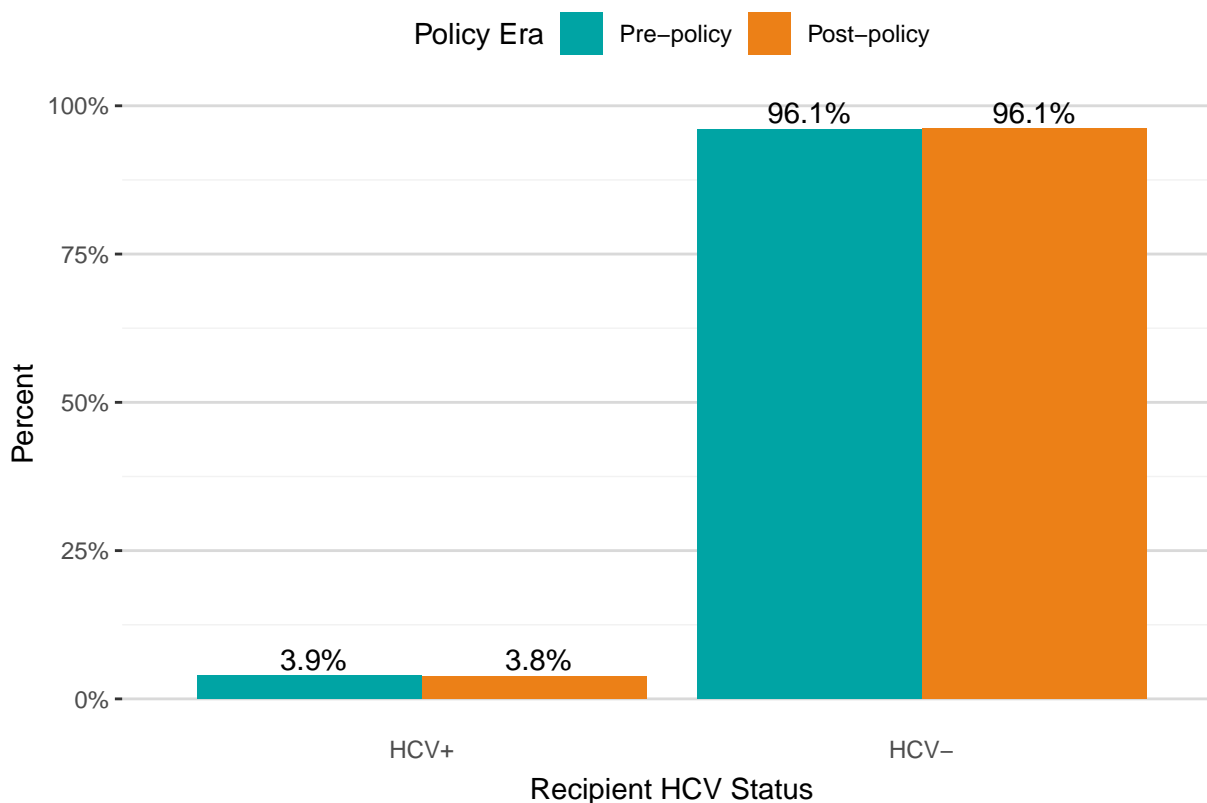


**Table 17. Deceased Donor Kidney Transplants by Policy Era and Donor HCV Status**

Donor HCV Status	Pre-policy		Post-policy	
	N	Percent	N	Percent
HCV+	910	8.5%	895	8.4%
HCV-	9,755	91.5%	9,768	91.6%
Total	10,665	100%	10,663	100%

**Figure 18** and **Table 18** show the number and proportion of deceased donor kidney transplants by recipient HCV status and policy era. There was little change in the proportion of transplants by recipient HCV status from pre- to post-policy.

**Figure 18. Deceased Donor Kidney Transplants by Policy Era and Recipient HCV Status**



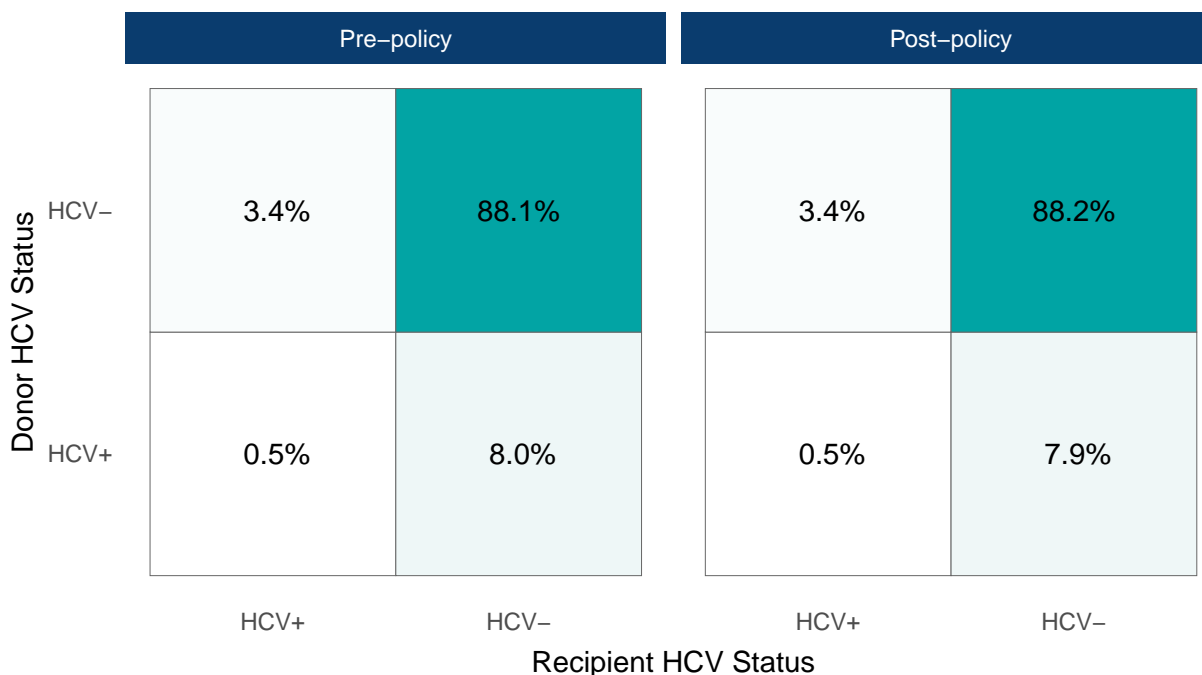
Note: 7 transplants missing recipient HCV status (2 pre-policy; 5 post-policy) were excluded.

**Table 18. Deceased Donor Kidney Transplants by Policy Era and Recipient HCV Status**

Recipient HCV Status	Pre-policy		Post-policy	
	N	Percent	N	Percent
HCV+	415	3.9%	410	3.8%
HCV-	10,248	96.1%	10,248	96.1%
Not Reported	2	0.0%	5	0.0%
Total	10,665	100%	10,663	100%

**Figure 19** and **Table 19** show the proportion of deceased donor kidney transplants within each policy era by donor and recipient HCV status. In the figure, the denominator for the percentages is all deceased donor kidney transplants in the policy era; in the table, the denominator is the number of transplants within each donor HCV status group. The proportion of transplants from HCV+ donors to HCV- recipients remained stable post-policy.

**Figure 19. Deceased Donor Kidney Transplants by Policy Era, Donor HCV Status, and Recipient HCV Status**



Note: 7 transplants missing recipient HCV status (2 pre-policy; 5 post-policy) were excluded.

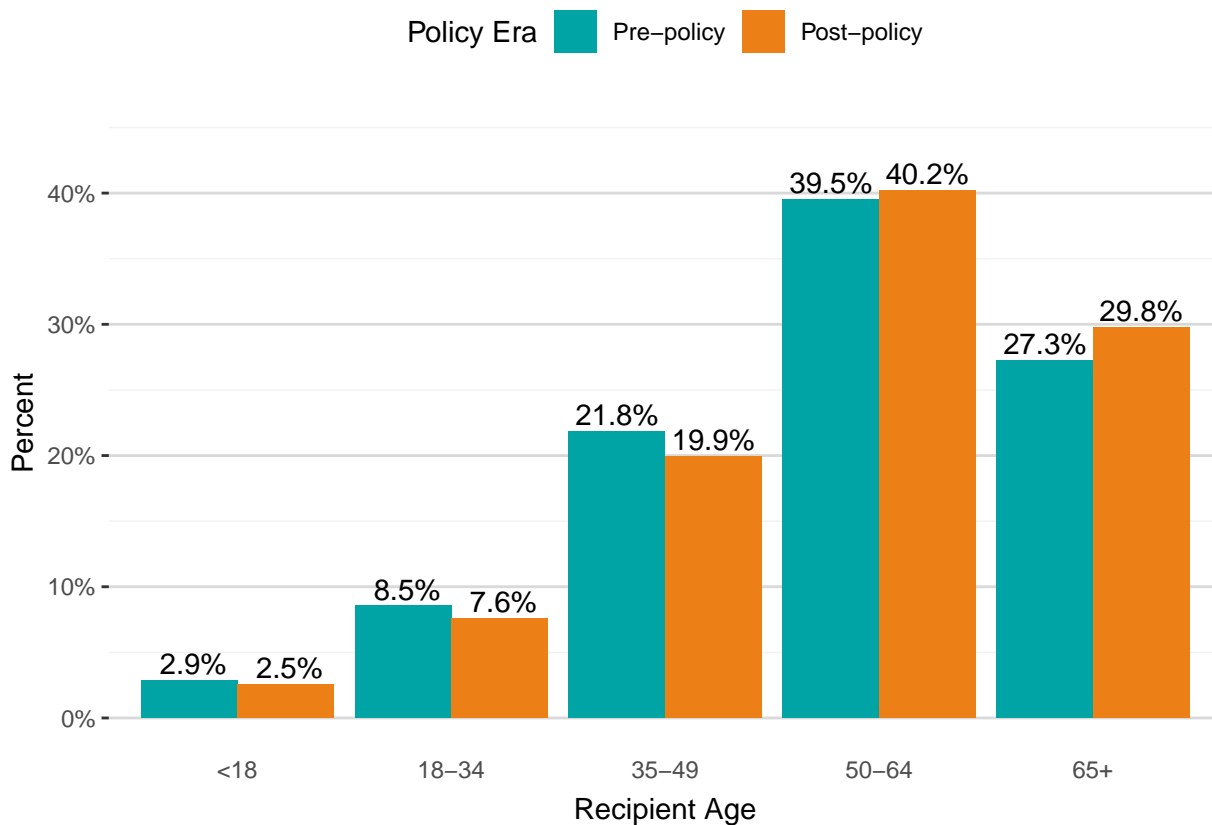
**Table 19. Deceased Donor Kidney Transplants by Policy Era, Donor HCV Status, and Recipient HCV Status**

Donor HCV Status	Recipient HCV Status	Pre-policy		Post-policy	
		N	Percent	N	Percent
HCV+	HCV+	56	6.2%	52	5.8%
	HCV-	854	93.8%	842	94.1%
	Not Reported	0	0.0%	1	0.1%
HCV-	HCV+	359	3.7%	358	3.7%
	HCV-	9,394	96.3%	9,406	96.3%
	Not Reported	2	0.0%	4	0.0%

## Kidney Transplants by Recipient Age

**Figure 20** and **Table 20** show the number and proportion of deceased donor kidney transplants by recipient age and policy era. The proportion of transplants to recipients in the <18, 18-34, and 35-49 age groups decreased post-policy, while the proportion of transplants to recipients in the 50-64 and 65+ age groups increased.

**Figure 20. Deceased Donor Kidney Transplants by Policy Era and Recipient Age at Transplant**



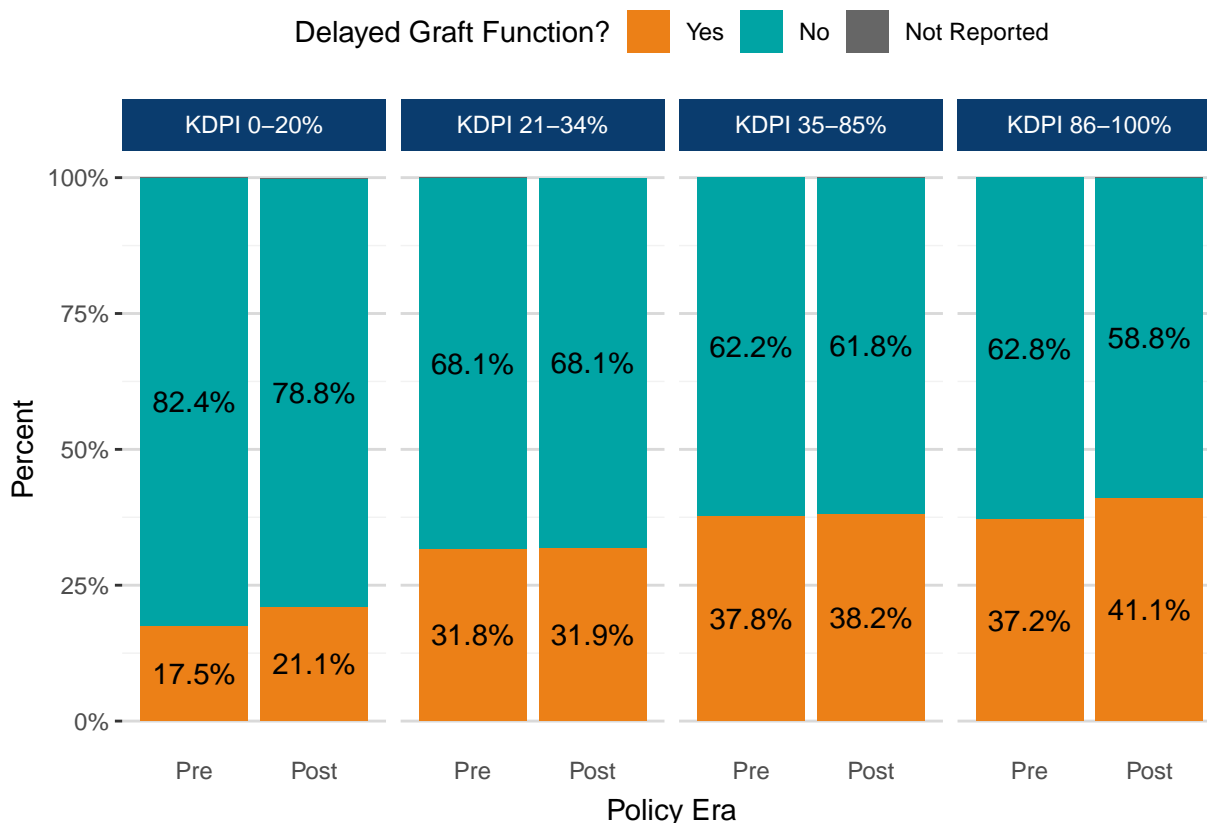
**Table 20. Deceased Donor Kidney Transplants by Policy Era and Recipient Age at Transplant**

Recipient Age	Pre-policy		Post-policy	
	N	Percent	N	Percent
<18	304	2.9%	270	2.5%
18-34	911	8.5%	808	7.6%
35-49	2,327	21.8%	2,123	19.9%
50-64	4,215	39.5%	4,288	40.2%
65+	2,908	27.3%	3,174	29.8%
Total	10,665	100%	10,663	100%

## Kidney Post-Transplant Outcomes

**Figure 21** and **Table 21** show the number and proportion of deceased donor kidney transplant recipients who experienced delayed graft function (DGF) by KDPI sequence and policy era. Overall, the proportion of transplant recipients who experienced DGF increased as KDPI increased both pre- and post-policy. The proportion of recipients experiencing DGF increased post-policy for the KDPI 0-20% and 86-100% groups. There was little change in the proportion of recipients who experienced DGF in the KDPI 21-34% or 35-85% groups.

**Figure 21. Delayed Graft Function for Deceased Donor Kidney Transplants by KDPI**





**Table 21. Delayed Graft Function for Deceased Donor Kidney Transplants by KDPI**

KDPI	Delayed Graft Function?	Pre-policy		Post-policy	
		N	Percent	N	Percent
0-20%	Yes	407	17.5%	395	21.1%
	No	1,915	82.4%	1,476	78.8%
	Not Reported	1	0.0%	3	0.2%
	Total	2,323	100%	1,874	100%
21-34%	Yes	549	31.8%	476	31.9%
	No	1,176	68.1%	1,015	68.1%
	Not Reported	1	0.1%	0	0.0%
	Total	1,726	100%	1,491	100%
35-85%	Yes	2,144	37.8%	2,335	38.2%
	No	3,530	62.2%	3,779	61.8%
	Not Reported	0	0.0%	2	0.0%
	Total	5,674	100%	6,116	100%
86-100%	Yes	350	37.2%	486	41.1%
	No	592	62.8%	695	58.8%
	Not Reported	0	0.0%	1	0.1%
	Total	942	100%	1,182	100%

## KDRI/KDPI Formula Comparison for Post-Policy Donors

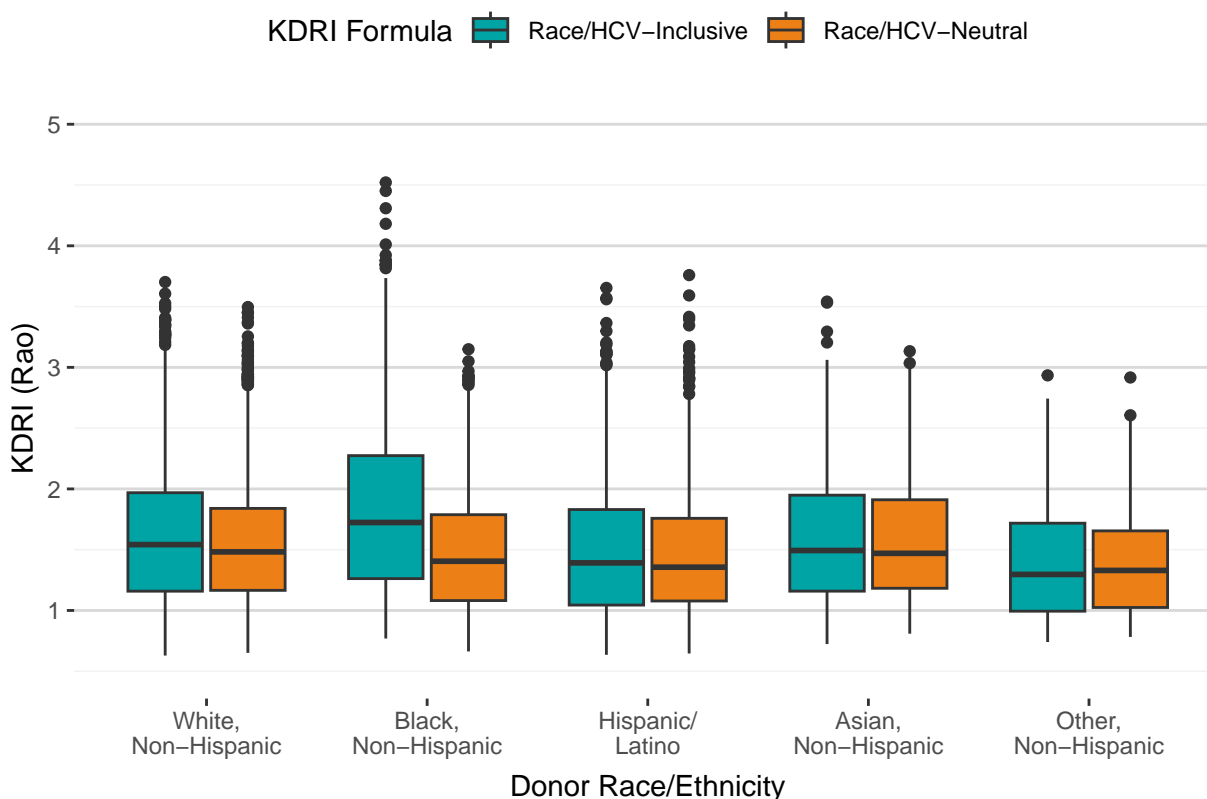
This section compares the current, race/HCV-neutral KDRI/KDPI with the original, race/HCV-inclusive KDRI/KDPI for kidney donors recovered in the post-policy era only (October 31, 2024 - April 30, 2025). A total of 77 donors with unknown race/ethnicity were excluded from this analysis as race/HCV-inclusive KDRI/KDPI could not be calculated for these donors. While KDPI in the previous sections of this report was based on the KDPI reference population used in allocation at the time of donation/transplant, in this section, KDRI was mapped to KDPI using the current reference population (deceased kidney donors recovered in 2024). This ensured a consistent reference population for all donors.

## KDRI Formula Comparison for Post-Policy Donors

This section compares distributions of the original, race/HCV-inclusive KDRI versus the current, race/HCV-neutral KDRI for the same cohort of post-policy kidney donors. Distributions are stratified by the donor characteristics included in the KDRI formula(s).

**Figure 22** and **Table 22** compare the distributions of KDRI for both KDRI formulas by donor race/ethnicity. Median KDRI for non-Hispanic Black donors was lower with the race/HCV-neutral KDRI formula used in allocation post-policy than it would have been with the original, race/HCV-inclusive formula. Median KDRI for donors with race/ethnicity other than non-Hispanic Black was similar with both KDRI formulas

**Figure 22. Post-Policy Deceased Kidney Donors by KDRI Formula and Race/Ethnicity**



Note: 77 donors with unknown race/ethnicity were excluded.

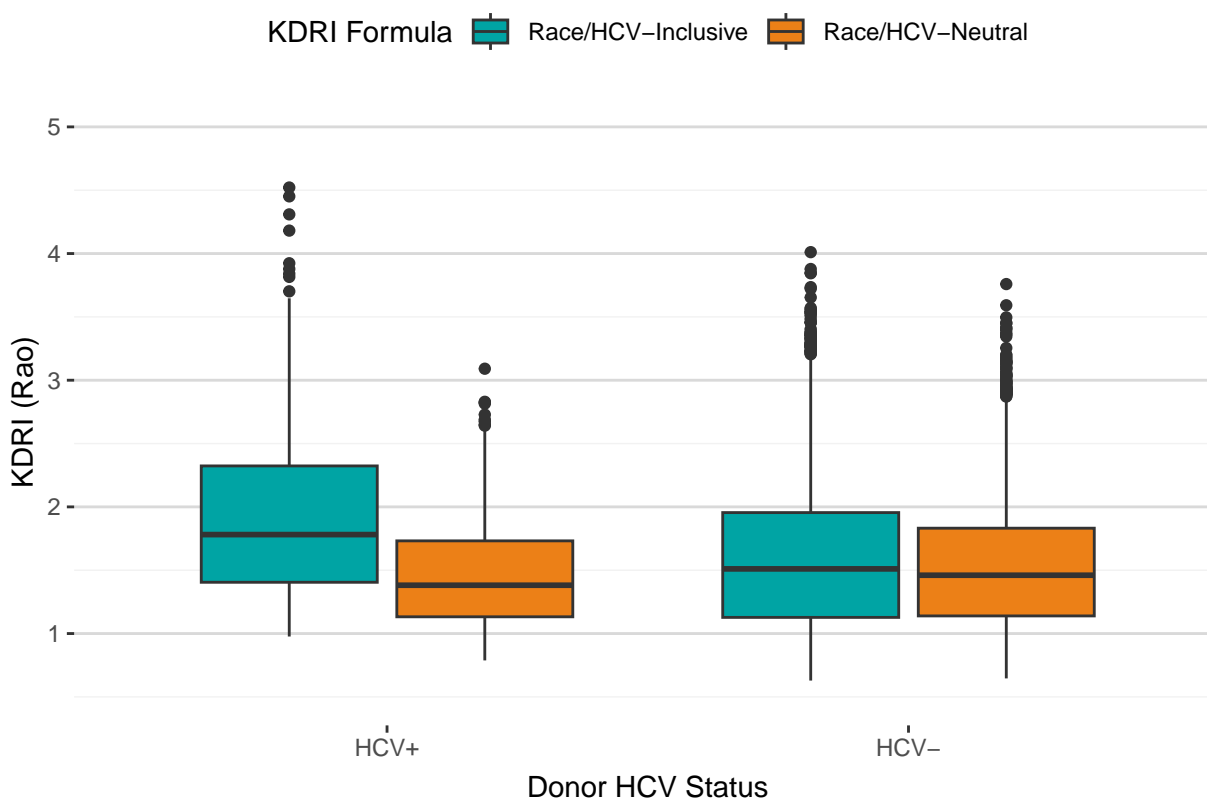
**Table 22. Post-Policy Deceased Kidney Donors by KDRI Formula and Race/Ethnicity**

Donor Race/Ethnicity	N	KDRI Formula	Min	25th Percentile	Median	75th Percentile	Max
White, Non-Hispanic	5,292	Race/HCV-Inclusive	0.63	1.16	1.54	1.97	3.70
		Race/HCV-Neutral	0.65	1.17	1.48	1.84	3.50
Black, Non-Hispanic	1,043	Race/HCV-Inclusive	0.77	1.26	1.72	2.27	4.52
		Race/HCV-Neutral	0.66	1.08	1.40	1.79	3.15
Hispanic/Latino	1,139	Race/HCV-Inclusive	0.64	1.04	1.39	1.83	3.65
		Race/HCV-Neutral	0.65	1.08	1.36	1.76	3.76
Asian, Non-Hispanic	212	Race/HCV-Inclusive	0.72	1.16	1.49	1.95	3.54
		Race/HCV-Neutral	0.81	1.18	1.47	1.91	3.13
Other, Non-Hispanic	117	Race/HCV-Inclusive	0.74	0.99	1.30	1.72	2.93
		Race/HCV-Neutral	0.78	1.02	1.33	1.65	2.92

\* Note: 77 donors with unknown race/ethnicity were excluded.

**Figure 23** and **Table 23** compare the distributions of KDRI for both KDRI formulas by donor HCV status. Median KDRI for HCV+ donors was lower with the race/HCV-neutral KDRI formula than it would have been with the original, race/HCV-inclusive formula. Median KDRI for HCV- donors was similar for both KDRI formulas.

**Figure 23. Post-Policy Deceased Kidney Donors by KDRI Formula and HCV Status**



Note: 77 donors with unknown race/ethnicity were excluded.

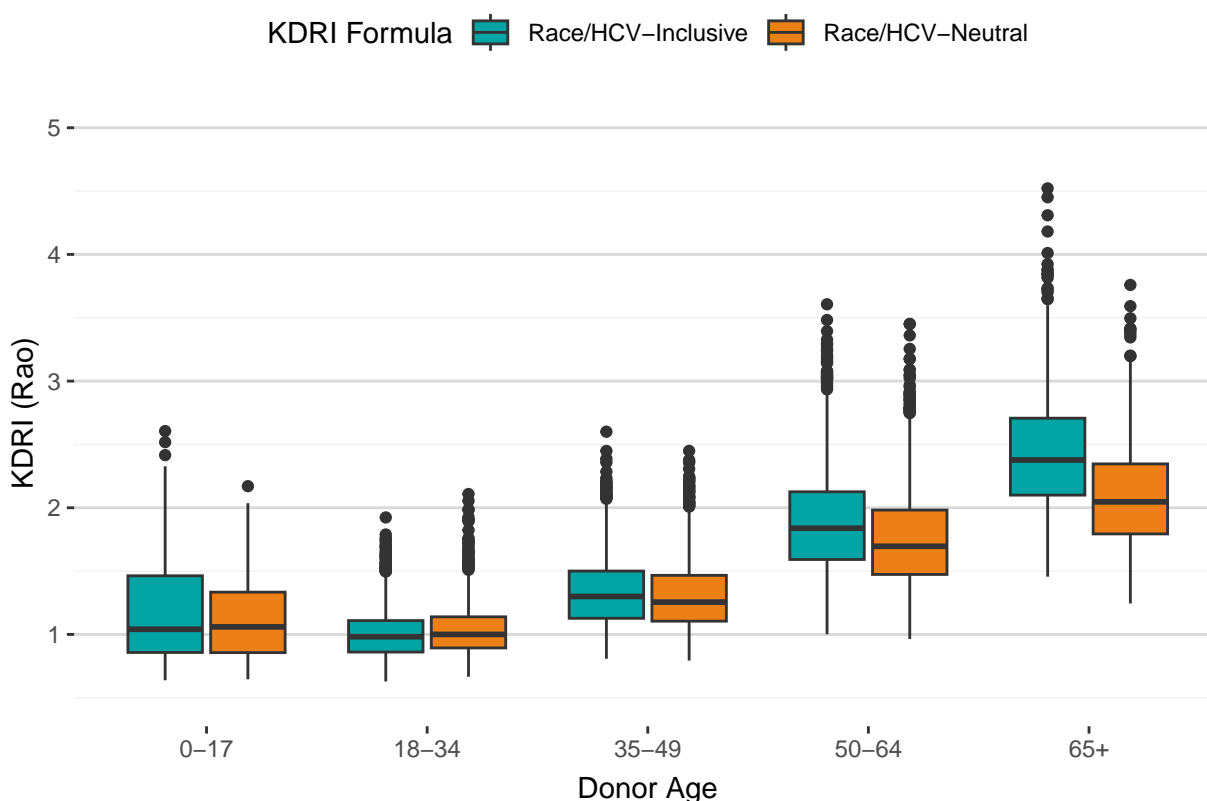
**Table 23. Post-Policy Deceased Kidney Donors by KDRI Formula and HCV Status**

Donor HCV Status	N	KDRI Formula	Min	25th Percentile	Median	75th Percentile	Max
HCV+	662	Race/HCV-Inclusive	0.98	1.40	1.78	2.32	4.52
		Race/HCV-Neutral	0.79	1.13	1.38	1.73	3.09
HCV-	7,141	Race/HCV-Inclusive	0.63	1.13	1.51	1.95	4.01
		Race/HCV-Neutral	0.65	1.14	1.46	1.83	3.76

\* Note: 77 donors with unknown race/ethnicity were excluded.

**Figure 24** and **Table 24** compare the distributions of KDRI for both KDRI formulas by donor age. Median KDRI for adult donors increased as donor age increased for both versions of the KDRI formula. However, median KDRI was lower for donors aged 50-64 and 65+ with the race/HCV-neutral KDRI formula than it would have been with the race/HCV-inclusive formula.

**Figure 24. Post-Policy Deceased Kidney Donors by KDRI Formula and Age**



Note: 77 donors with unknown race/ethnicity were excluded.

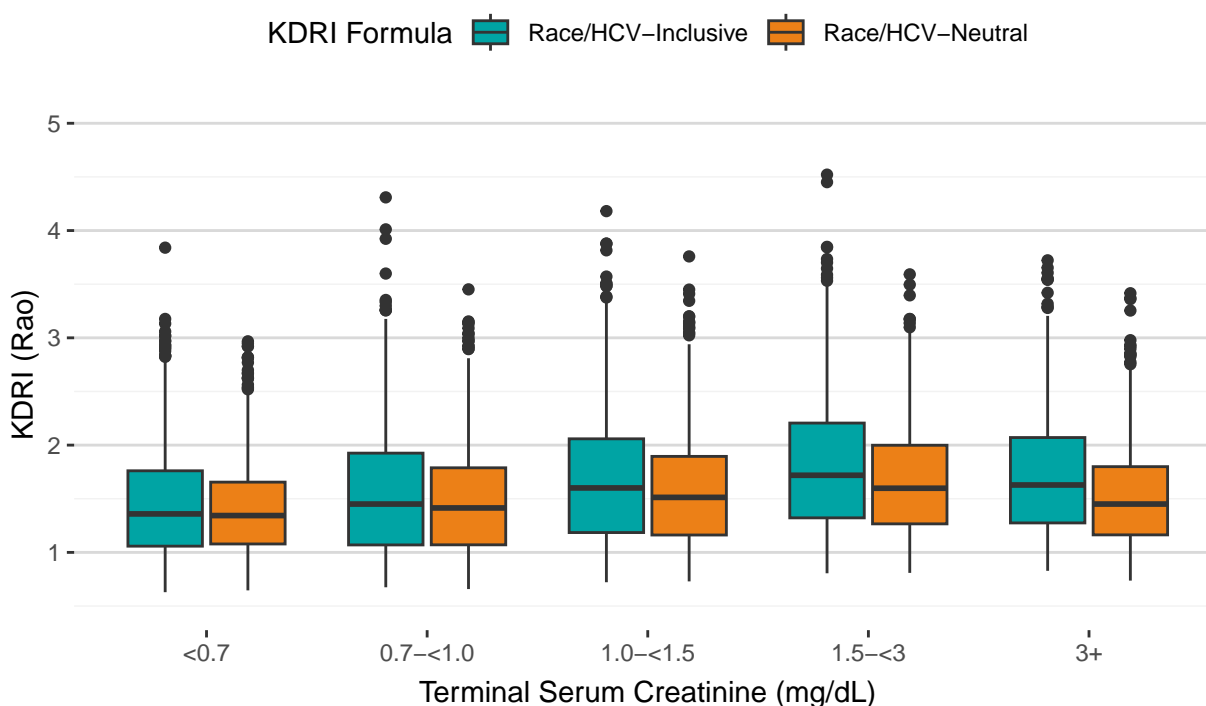
**Table 24. Post-Policy Deceased Kidney Donors by KDRI Formula and Age**

Donor Age	N	KDRI Formula	Min	25th Percentile	Median	75th Percentile	Max
0-17	345	Race/HCV-Inclusive	0.64	0.86	1.04	1.46	2.61
		Race/HCV-Neutral	0.65	0.86	1.06	1.33	2.17
18-34	1,355	Race/HCV-Inclusive	0.63	0.86	0.98	1.11	1.92
		Race/HCV-Neutral	0.67	0.89	1.00	1.14	2.11
35-49	2,243	Race/HCV-Inclusive	0.81	1.13	1.30	1.50	2.60
		Race/HCV-Neutral	0.79	1.10	1.26	1.47	2.45
50-64	2,820	Race/HCV-Inclusive	1.00	1.59	1.84	2.13	3.61
		Race/HCV-Neutral	0.96	1.47	1.70	1.98	3.45
65+	1,040	Race/HCV-Inclusive	1.46	2.10	2.38	2.71	4.52
		Race/HCV-Neutral	1.24	1.79	2.05	2.35	3.76

\* Note: 77 donors with unknown race/ethnicity were excluded.

**Figure 25** and **Table 25** compare the distributions of KDRI for both KDRI formulas by terminal serum creatinine. Median KDRI for donors with terminal serum creatinine <0.7 and 0.7-1.0 mg/dL was similar with both formulas. For donors with terminal serum creatinine 1.0-<1.5, 1.5-<3, and 3+ mg/dL, KDRI with the race/HCV-neutral formula was lower than it would have been with the race/HCV-inclusive formula. This difference was most pronounced for donors with creatinine 3+ mg/dL.

**Figure 25. Post-Policy Deceased Kidney Donors by KDRI Formula and Terminal Serum Creatinine**



Note: 77 donors with unknown race/ethnicity were excluded.

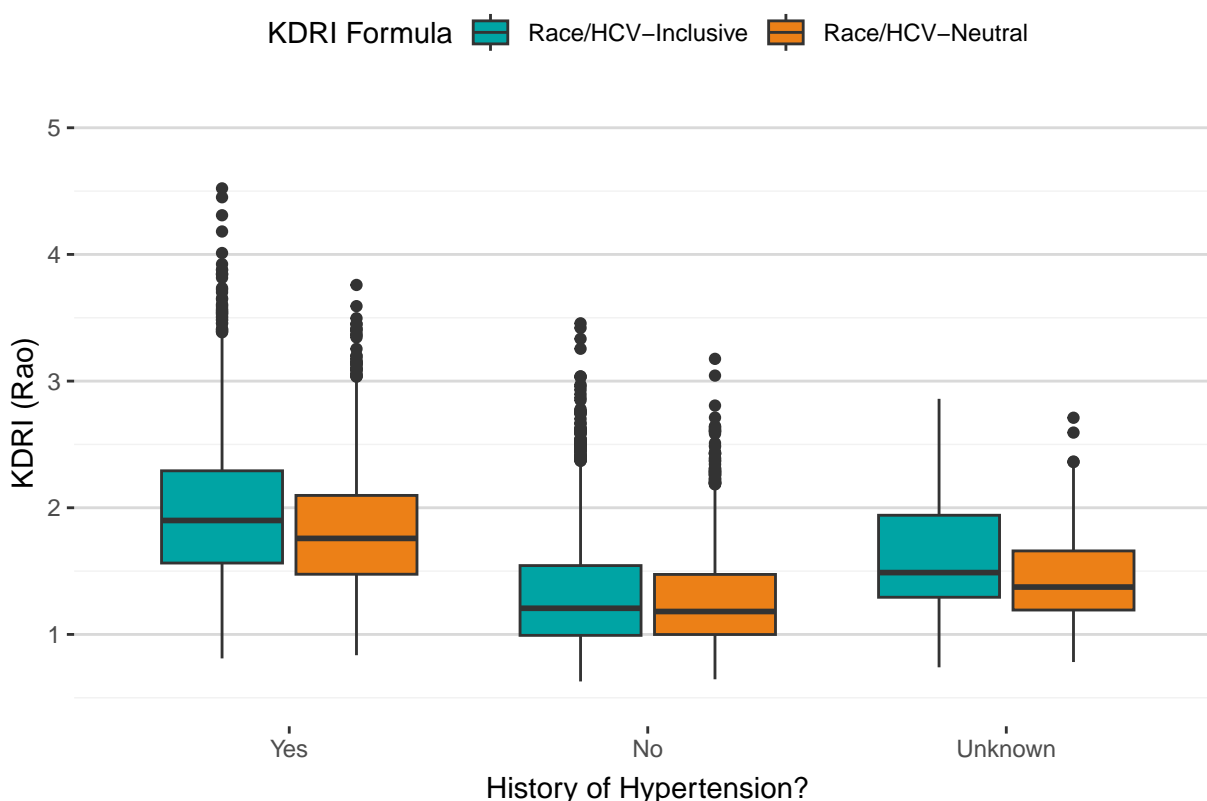
**Table 25. Post-Policy Deceased Kidney Donors by KDRI Formula and Terminal Serum Creatinine**

Terminal Serum Creatinine (mg/dL)	N	KDRI Formula	Min	25th Percentile	Median	75th Percentile	Max
<0.7	1,874	Race/HCV-Inclusive	0.63	1.06	1.36	1.76	3.84
		Race/HCV-Neutral	0.65	1.08	1.34	1.65	2.97
0.7-<1.0	1,893	Race/HCV-Inclusive	0.67	1.07	1.45	1.93	4.31
		Race/HCV-Neutral	0.66	1.07	1.41	1.79	3.45
1.0-<1.5	1,611	Race/HCV-Inclusive	0.72	1.18	1.60	2.06	4.18
		Race/HCV-Neutral	0.73	1.16	1.51	1.89	3.76
1.5-<3	1,472	Race/HCV-Inclusive	0.81	1.32	1.72	2.21	4.52
		Race/HCV-Neutral	0.81	1.27	1.60	2.00	3.59
3+	953	Race/HCV-Inclusive	0.83	1.27	1.63	2.07	3.72
		Race/HCV-Neutral	0.74	1.16	1.45	1.80	3.42

\* Note: 77 donors with unknown race/ethnicity were excluded.

**Figure 26** and **Table 26** compare the distributions of KDRI for both KDRI formulas by donor history of hypertension. Median KDRI for donors with a history of hypertension was lower with the race/HCV-neutral formula than it would have been with the race/HCV-inclusive formula. Median KDRI for donors with no history of hypertension was similar with both versions of KDRI.

**Figure 26. Post-Policy Deceased Kidney Donors by KDRI Formula and History of Hypertension**



Note: 77 donors with unknown race/ethnicity were excluded.

**Table 26. Post-Policy Deceased Kidney Donors by KDRI Formula and History of Hypertension**

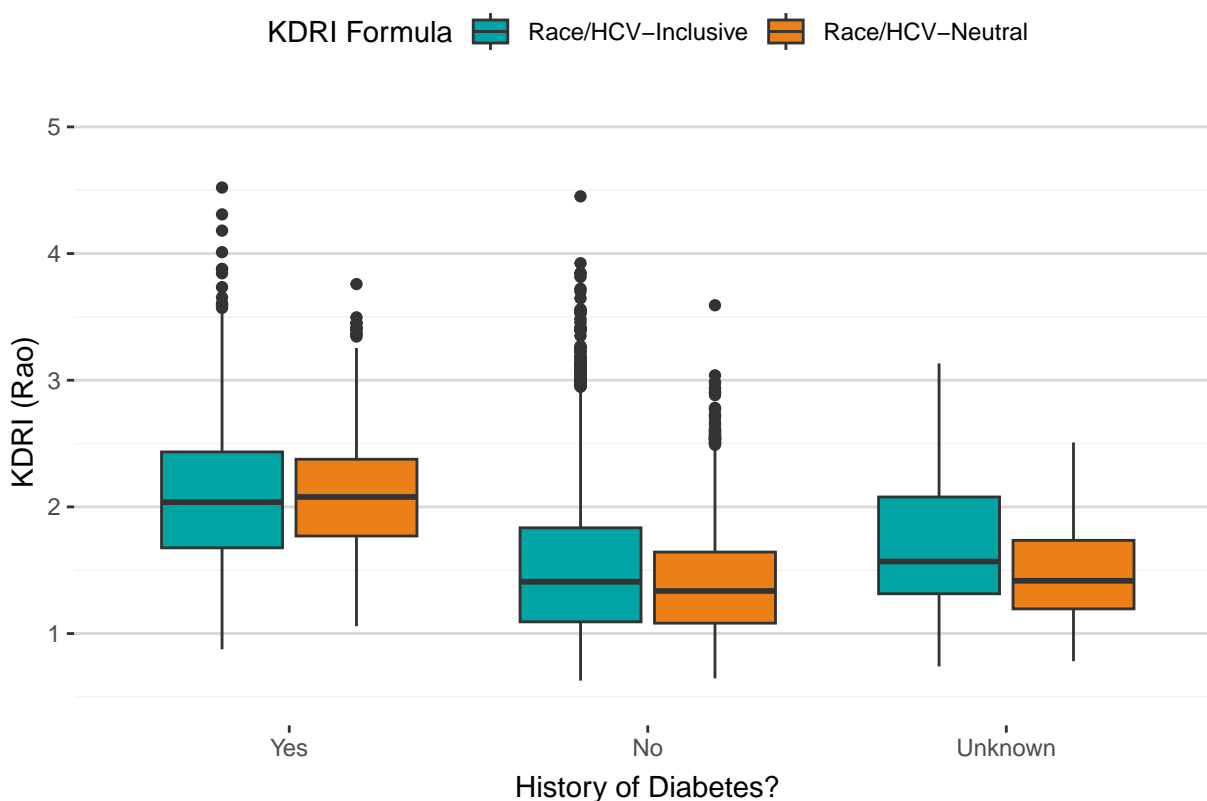
History of Hypertension?	N	KDRI Formula	Min	25th Percentile	Median	75th Percentile	Max
Yes	3,606	Race/HCV-Inclusive	0.81	1.56	1.90	2.29	4.52
		Race/HCV-Neutral	0.84	1.48	1.76	2.10	3.76
No	4,069	Race/HCV-Inclusive	0.63	0.99	1.21	1.54	3.46
		Race/HCV-Neutral	0.65	1.00	1.18	1.47	3.18
Unknown	128	Race/HCV-Inclusive	0.74	1.29	1.49	1.94	2.86
		Race/HCV-Neutral	0.78	1.19	1.37	1.66	2.71

\* Note: 77 donors with unknown race/ethnicity were excluded.



**Figure 27** and **Table 27** compare the distributions of KDRI for both KDRI formulas by donor history of diabetes. Median KDRI with the race/HCV-neutral formula was slightly higher for donors with a history of diabetes and slightly lower for donors with no history of diabetes compared to the race/HCV-inclusive KDRI formula.

**Figure 27. Post-Policy Deceased Kidney Donors by KDRI Formula and History of Diabetes**



Note: 77 donors with unknown race/ethnicity were excluded.

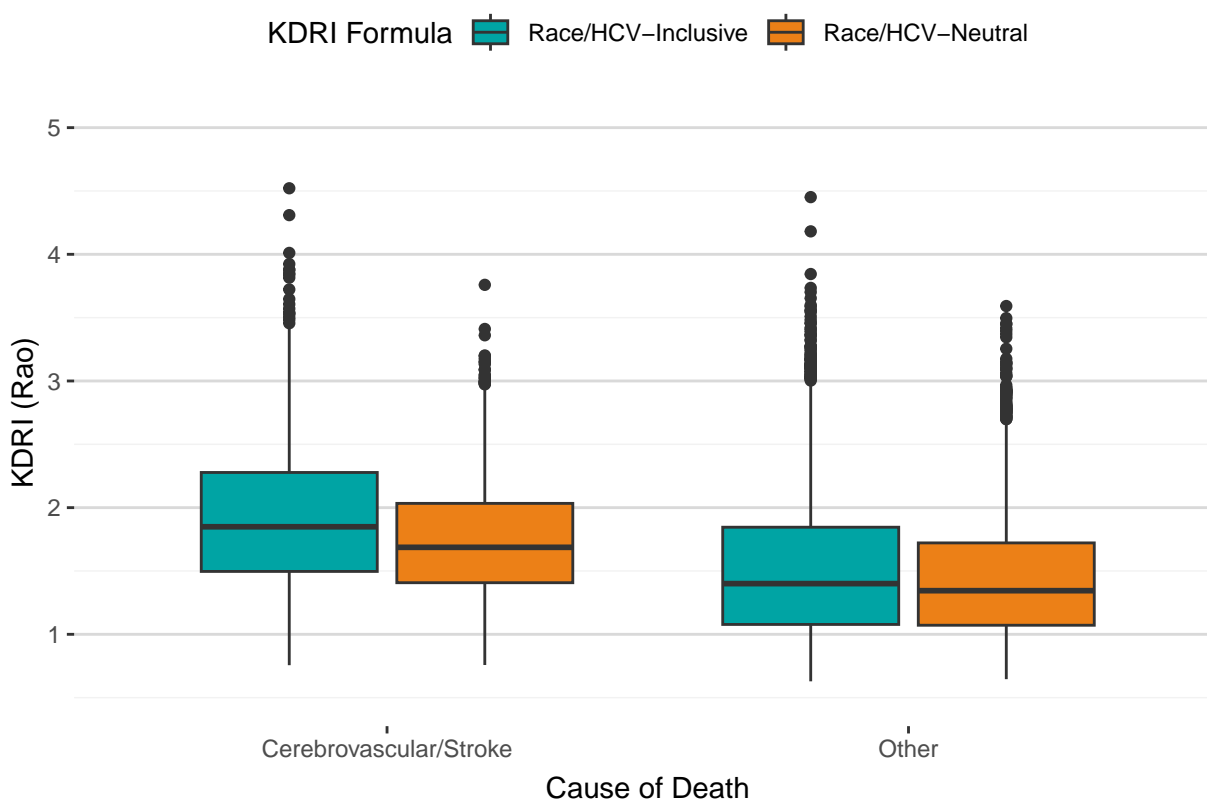
**Table 27. Post-Policy Deceased Kidney Donors by KDRI Formula and History of Diabetes**

History of Diabetes?	N	KDRI Formula	Min	25th Percentile	Median	75th Percentile	Max
Yes	1,417	Race/HCV-Inclusive	0.88	1.68	2.04	2.43	4.52
		Race/HCV-Neutral	1.06	1.77	2.08	2.38	3.76
No	6,267	Race/HCV-Inclusive	0.63	1.09	1.41	1.83	4.45
		Race/HCV-Neutral	0.65	1.08	1.34	1.64	3.59
Unknown	119	Race/HCV-Inclusive	0.74	1.31	1.57	2.08	3.13
		Race/HCV-Neutral	0.78	1.19	1.42	1.74	2.51

\* Note: 77 donors with unknown race/ethnicity were excluded.

**Figure 28** and **Table 28** compare the distributions of KDRI for both KDRI formulas by donor cause of death. With both versions of KDRI, median KDRI was higher for donors with cerebrovascular/stroke as the cause of death versus other causes. Median KDRI with the race/HCV-neutral formula was slightly lower than it would have been with the race/HCV-inclusive formula both for donors with cerebrovascular/stroke as their cause of death and for donors with a cause of death other than cerebrovascular/stroke.

**Figure 28. Post-Policy Deceased Kidney Donors by KDRI Formula and Cause of Death**



Note: 77 donors with unknown race/ethnicity were excluded.

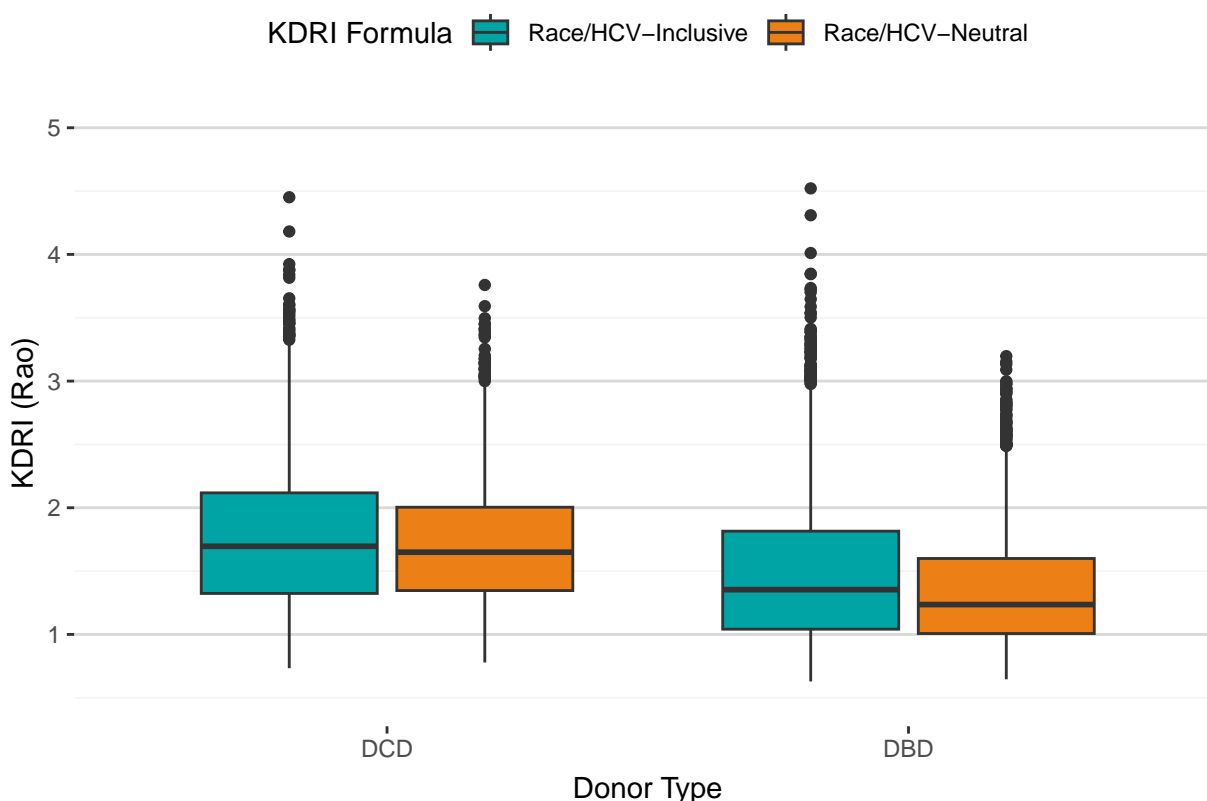
**Table 28. Post-Policy Deceased Kidney Donors by KDRI Formula and Cause of Death**

Cause of Death	N	KDRI Formula	Min	25th Percentile	Median	75th Percentile	Max
Cerebrovascular/Stroke	2,092	Race/HCV-Inclusive	0.76	1.50	1.85	2.28	4.52
		Race/HCV-Neutral	0.76	1.41	1.69	2.03	3.76
Other	5,711	Race/HCV-Inclusive	0.63	1.08	1.40	1.85	4.45
		Race/HCV-Neutral	0.65	1.07	1.34	1.72	3.59

\* Note: 77 donors with unknown race/ethnicity were excluded.

**Figure 29** and **Table 29** compare the distributions of KDRI for both KDRI formulas by donor type (DCD or DBD). Median KDRI was higher for DCD donors than DBD donors using both versions of KDRI. Median KDRI with the race/HCV-neutral formula was lower than it would have been with the race/HCV-inclusive formula for DBD donors, while median KDRI was similar for DCD donors with both formulas.

**Figure 29. Post-Policy Deceased Kidney Donors by KDRI Formula and Donor Type**



Note: 77 donors with unknown race/ethnicity were excluded.

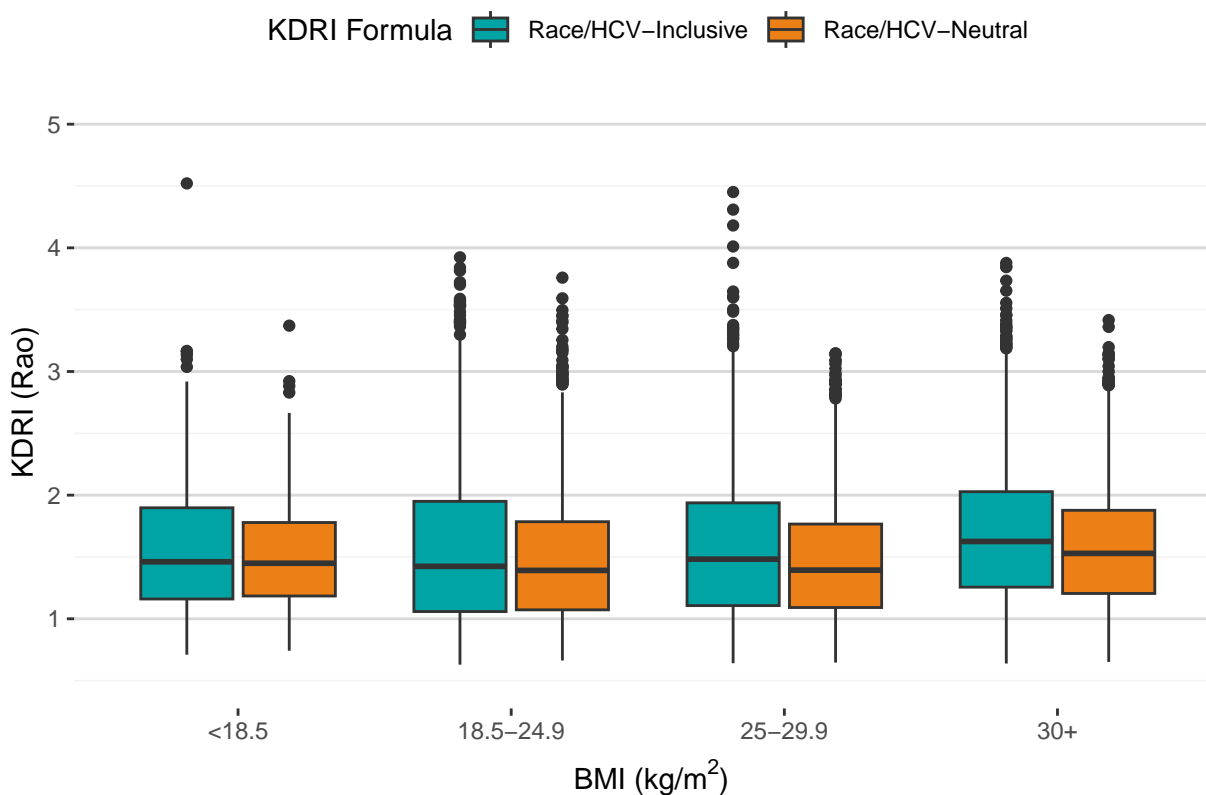
**Table 29. Post-Policy Deceased Kidney Donors by KDRI Formula and Donor Type**

Donor Type	N	KDRI Formula	Min	25th Percentile	Median	75th Percentile	Max
DCD	3,748	Race/HCV-Inclusive	0.73	1.32	1.70	2.12	4.45
		Race/HCV-Neutral	0.78	1.35	1.65	2.00	3.76
DBD	4,055	Race/HCV-Inclusive	0.63	1.04	1.35	1.82	4.52
		Race/HCV-Neutral	0.65	1.01	1.24	1.60	3.20

\* Note: 77 donors with unknown race/ethnicity were excluded.

**Figure 30** and **Table 30** compare the distributions of KDRI for both KDRI formulas by donor BMI. Median KDRI with the race/HCV-neutral formula was slightly lower than it would have been with the race/HCV-inclusive formula for donors in the BMI 25-29.9 and 30+ groups.

**Figure 30. Post-Policy Deceased Kidney Donors by KDRI Formula and BMI**



Note: 77 donors with unknown race/ethnicity were excluded.

**Table 30. Post-Policy Deceased Kidney Donors by KDRI Formula and BMI**

BMI (kg/m <sup>2</sup> )	N	KDRI Formula	Min	25th Percentile	Median	75th Percentile	Max
<18.5	308	Race/HCV-Inclusive	0.71	1.16	1.46	1.90	4.52
		Race/HCV-Neutral	0.74	1.18	1.45	1.78	3.37
18.5-24.9	2,051	Race/HCV-Inclusive	0.63	1.06	1.42	1.95	3.92
		Race/HCV-Neutral	0.66	1.07	1.39	1.79	3.76
25-29.9	2,239	Race/HCV-Inclusive	0.64	1.11	1.48	1.94	4.45
		Race/HCV-Neutral	0.65	1.09	1.39	1.77	3.15
30+	3,205	Race/HCV-Inclusive	0.64	1.26	1.63	2.03	3.88
		Race/HCV-Neutral	0.65	1.20	1.53	1.88	3.42

\* Note: 77 donors with unknown race/ethnicity were excluded.

## KDPI Sequence Comparison for Post-Policy Donors

This section compares post-policy kidney donors' current KDPI sequence (which is based on the race/HCV-neutral KDRI formula) with the KDPI sequence they would have appeared in using the original, race/HCV-inclusive KDRI formula. For both KDRI formulas, KDRI was mapped to KDPI using the current KDPI reference population (deceased kidney donors recovered in 2024).

**Figure 31** compares the KDPI sequence that each donor appeared in using each version of the KDRI/KDPI formula. Overall, the majority of donors (77.2%, N=6,023) remained in the same KDPI sequence that they would have been in prior to the removal of race and HCV from KDRI/KDPI, while 11.1% (N=870) of donors were in a lower KDPI sequence than they would have been pre-policy, and 11.7% (N=910) were in a higher KDPI sequence.

**Figure 31. Post-Policy Deceased Kidney Donors by KDPI Formula and KDPI Sequence**

Race/HCV-Inclusive KDPI	86–100% -	0.0% (N=0)	0.0% (N=0)	4.4% (N=341)	13.0% (N=1,013)
	35–85% -	0.7% (N=51)	3.4% (N=267)	42.9% (N=3,347)	4.6% (N=361)
	21–34% -	2.7% (N=211)	7.1% (N=551)	3.8% (N=295)	0.0% (N=0)
	0–20% -	14.3% (N=1,112)	3.0% (N=233)	0.3% (N=21)	0.0% (N=0)
		0–20%	21–34%	35–85%	86–100%
		Race/HCV-Neutral KDPI			

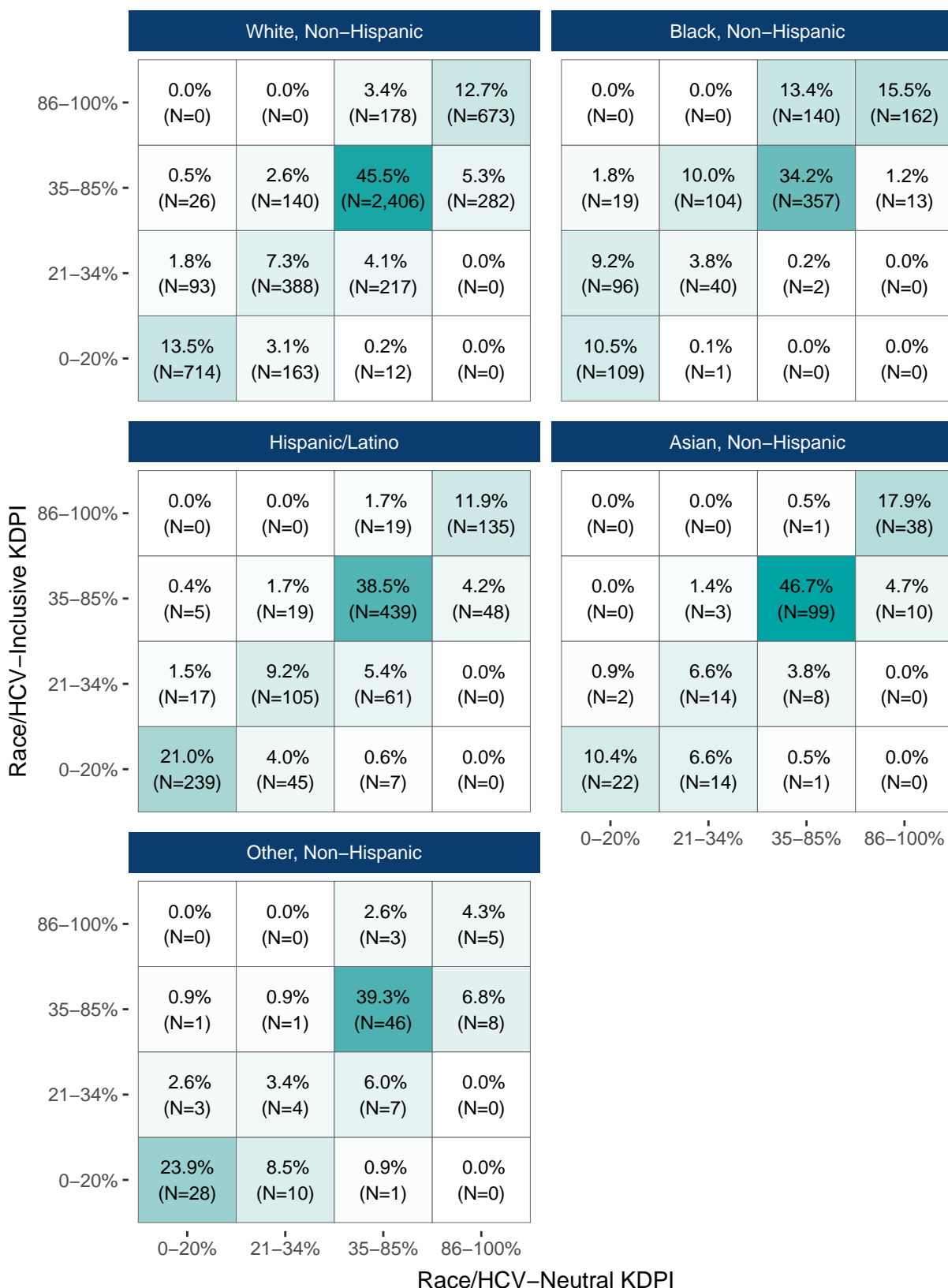
Note: 77 donors with unknown race/ethnicity were excluded.

**Table 31** and **Figure 32** compare the KDPI sequence that each donor appeared in using each version of the KDRI/KDPI formula, stratified by donor race/ethnicity. Within all racial/ethnic groups, the majority of donors remained in the same KDPI sequence that they would have been in before the removal of race and HCV from KDRI/KDPI. However, 34.4% of non-Hispanic Black donors were in a lower KDPI sequence with the race/HCV-neutral formula than they would have been prior to implementation.

**Table 31. Post-Policy Deceased Kidney Donors by KDPI Formula, KDPI Sequence and Race/Ethnicity**

Donor Race/Ethnicity	Was donor's KDPI sequence lower, the same, or higher than it would have been prior to implementation?			Total
	Lower	Same	Higher	
White, Non-Hispanic	437 (8.3%)	4,181 (79.0%)	674 (12.7%)	5,292 (100.0%)
Black, Non-Hispanic	359 (34.4%)	668 (64.0%)	16 (1.5%)	1,043 (100.0%)
Hispanic/Latino	60 (5.3%)	918 (80.6%)	161 (14.1%)	1,139 (100.0%)
Asian, Non-Hispanic	6 (2.8%)	173 (81.6%)	33 (15.6%)	212 (100.0%)
Other, Non-Hispanic	8 (6.8%)	83 (70.9%)	26 (22.2%)	117 (100.0%)

\* Note: 77 donors with unknown race/ethnicity were excluded.

**Figure 32. Post-Policy Deceased Kidney Donors by KDPI Formula, KDPI Sequence and Race/Ethnicity**

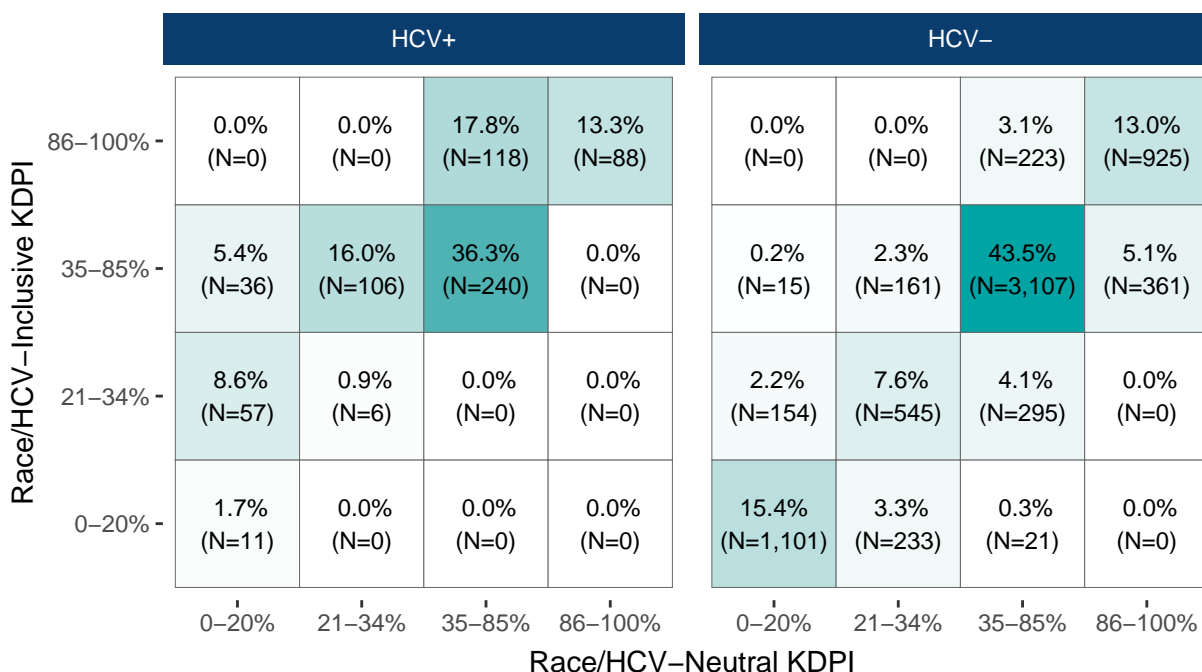
**Table 32** and **Figure 33** compare the KDPI sequence that each donor appeared in using each version of the KDRI/KDPI formula, stratified by donor HCV status. A large proportion (47.9%) of HCV+ donors were in a lower KDPI sequence with the race/HCV-neutral formula than they would have been prior to implementation, while 52.1% remained in the same KDPI sequence. None were in a higher sequence. The majority (79.5%) of HCV- donors remained in the same KDPI sequence, while 7.7% were in a lower sequence and 12.7% were in a higher sequence than they would have been pre-implementation.

**Table 32. Post-Policy Deceased Kidney Donors by KDPI Formula, KDPI Sequence and HCV Status**

Donor HCV Status	Was donor's KDPI sequence lower, the same, or higher than it would have been prior to implementation?			Total
	Lower	Same	Higher	
HCV+	317 (47.9%)	345 (52.1%)	0 (0.0%)	662 (100.0%)
HCV-	553 (7.7%)	5,678 (79.5%)	910 (12.7%)	7,141 (100.0%)

\* Note: 77 donors with unknown race/ethnicity were excluded.

**Figure 33. Post-Policy Deceased Kidney Donors by KDPI Formula, KDPI Sequence and HCV Status**



Note: 77 donors with unknown race/ethnicity were excluded.



**Table 33** and **Figure 34** compare the KDPI sequence that each donor appeared in using each version of the KDRI/KDPI formula, stratified by donor age. The majority of donors in each age group remained in the same KDPI sequence with both versions of the KDRI/KDPI formula. The 18-34 age group had the highest proportion of donors move to a higher KDPI sequence than they would have been in pre-implementation (19.4%).

**Table 33. Post-Policy Deceased Kidney Donors by KDPI Formula, KDPI Sequence and Age**

Donor Age	Was donor's KDPI sequence lower, the same, or higher than it would have been prior to implementation?			Total
	Lower	Same	Higher	
0-17	29 (8.4%)	285 (82.6%)	31 (9.0%)	345 (100.0%)
18-34	166 (12.3%)	926 (68.3%)	263 (19.4%)	1,355 (100.0%)
35-49	276 (12.3%)	1,666 (74.3%)	301 (13.4%)	2,243 (100.0%)
50-64	246 (8.7%)	2,291 (81.2%)	283 (10.0%)	2,820 (100.0%)
65+	153 (14.7%)	855 (82.2%)	32 (3.1%)	1,040 (100.0%)

\* Note: 77 donors with unknown race/ethnicity were excluded.

**Figure 34. Post-Policy Deceased Kidney Donors by KDPI Formula, KDPI Sequence and Age**

0–17					18–34				
Race/HCV–Inclusive KDPI	86–100% -	0.0% (N=0)	0.0% (N=0)	1.2% (N=4)	0.3% (N=1)	0.0% (N=0)	0.0% (N=0)	0.0% (N=0)	0.0% (N=0)
	35–85% -	0.3% (N=1)	2.9% (N=10)	31.0% (N=107)	0.9% (N=3)	0.8% (N=11)	4.1% (N=55)	7.2% (N=97)	0.3% (N=4)
	21–34% -	4.1% (N=14)	7.0% (N=24)	1.7% (N=6)	0.0% (N=0)	7.4% (N=100)	8.9% (N=120)	6.8% (N=92)	0.0% (N=0)
	0–20% -	44.3% (N=153)	6.1% (N=21)	0.3% (N=1)	0.0% (N=0)	52.3% (N=709)	10.8% (N=147)	1.5% (N=20)	0.0% (N=0)
35–49					50–64				
Race/HCV–Inclusive KDPI	86–100% -	0.0% (N=0)	0.0% (N=0)	0.2% (N=4)	0.3% (N=7)	0.0% (N=0)	0.0% (N=0)	6.4% (N=180)	15.8% (N=445)
	35–85% -	1.7% (N=39)	6.2% (N=140)	47.6% (N=1,068)	2.3% (N=51)	0.0% (N=0)	2.2% (N=62)	63.1% (N=1,780)	9.6% (N=271)
	21–34% -	4.1% (N=93)	15.3% (N=344)	8.2% (N=185)	0.0% (N=0)	0.1% (N=4)	2.2% (N=63)	0.4% (N=12)	0.0% (N=0)
	0–20% -	11.0% (N=247)	2.9% (N=65)	0.0% (N=0)	0.0% (N=0)	0.1% (N=3)	0.0% (N=0)	0.0% (N=0)	0.0% (N=0)
65+									
Race/HCV–Neutral KDPI	86–100% -	0.0% (N=0)	0.0% (N=0)	14.7% (N=153)	53.8% (N=560)	0–20%	21–34%	35–85%	86–100%
	35–85% -	0.0% (N=0)	0.0% (N=0)	28.4% (N=295)	3.1% (N=32)				
	21–34% -	0.0% (N=0)	0.0% (N=0)	0.0% (N=0)	0.0% (N=0)				
	0–20% -	0.0% (N=0)	0.0% (N=0)	0.0% (N=0)	0.0% (N=0)				

Note: 77 donors with unknown race/ethnicity were excluded.

**Table 34** and **Figure 35** compare the KDPI sequence that each donor appeared in using each version of the KDRI/KDPI formula, stratified by terminal serum creatinine. The majority of donors in each category of terminal serum creatinine remained in the same KDPI sequence with both versions of the KDRI/KDPI formula.

**Table 34. Post-Policy Deceased Kidney Donors by KDPI Formula, KDPI Sequence and Terminal Serum Creatinine**

Terminal Serum Creatinine (mg/dL)	Was donor's KDPI sequence lower, the same, or higher than it would have been prior to implementation?			Total
	Lower	Same	Higher	
<0.7	153 (8.2%)	1,422 (75.9%)	299 (16.0%)	1,874 (100.0%)
0.7-<1.0	192 (10.1%)	1,461 (77.2%)	240 (12.7%)	1,893 (100.0%)
1.0-<1.5	172 (10.7%)	1,271 (78.9%)	168 (10.4%)	1,611 (100.0%)
1.5-<3	167 (11.3%)	1,160 (78.8%)	145 (9.9%)	1,472 (100.0%)
3+	186 (19.5%)	709 (74.4%)	58 (6.1%)	953 (100.0%)

\* Note: 77 donors with unknown race/ethnicity were excluded.

**Figure 35. Post-Policy Deceased Kidney Donors by KDPI Formula, KDPI Sequence and Terminal Serum Creatinine**

<0.7					0.7–<1.0				
Race/HCV–Inclusive KDPI	86–100% -	0.0% (N=0)	0.0% (N=0)	2.1% (N=39)	6.5% (N=122)	0.0% (N=0)	0.0% (N=0)	4.3% (N=82)	10.4% (N=197)
	35–85% -	0.2% (N=4)	3.0% (N=57)	42.7% (N=800)	4.4% (N=83)	0.6% (N=11)	2.7% (N=52)	40.3% (N=763)	4.6% (N=87)
	21–34% -	2.8% (N=53)	7.4% (N=138)	6.1% (N=114)	0.0% (N=0)	2.5% (N=47)	6.4% (N=122)	4.1% (N=78)	0.0% (N=0)
	0–20% -	19.3% (N=362)	4.9% (N=91)	0.6% (N=11)	0.0% (N=0)	20.0% (N=379)	3.8% (N=71)	0.2% (N=4)	0.0% (N=0)
1.0–<1.5					1.5–<3				
Race/HCV–Inclusive KDPI	86–100% -	0.0% (N=0)	0.0% (N=0)	4.2% (N=68)	15.8% (N=255)	0.0% (N=0)	0.0% (N=0)	5.7% (N=84)	21.1% (N=310)
	35–85% -	0.5% (N=8)	3.4% (N=55)	42.8% (N=690)	5.1% (N=82)	0.7% (N=11)	3.1% (N=46)	45.2% (N=665)	5.2% (N=76)
	21–34% -	2.5% (N=41)	7.0% (N=113)	2.8% (N=45)	0.0% (N=0)	1.8% (N=26)	7.1% (N=104)	2.6% (N=38)	0.0% (N=0)
	0–20% -	13.2% (N=213)	2.2% (N=36)	0.3% (N=5)	0.0% (N=0)	5.5% (N=81)	2.0% (N=30)	0.1% (N=1)	0.0% (N=0)
3+									
Race/HCV–Neutral KDPI	86–100% -	0.0% (N=0)	0.0% (N=0)	7.1% (N=68)	13.5% (N=129)	0–20%	21–34%	35–85%	86–100%
	35–85% -	1.8% (N=17)	6.0% (N=57)	45.0% (N=429)	3.5% (N=33)				
	21–34% -	4.6% (N=44)	7.8% (N=74)	2.1% (N=20)	0.0% (N=0)				
	0–20% -	8.1% (N=77)	0.5% (N=5)	0.0% (N=0)	0.0% (N=0)				

Note: 77 donors with unknown race/ethnicity were excluded.

**Table 35** and **Figure 36** compare the KDPI sequence that each donor appeared in using each version of the KDRI/KDPI formula, stratified by donor history of hypertension. The majority of donors with and without a history of hypertension remained in the same KDPI sequence with both versions of the KDRI/KDPI formula.

**Table 35. Post-Policy Deceased Kidney Donors by KDPI Formula, KDPI Sequence and History of Hypertension**

History of Hypertension?	Was donor's KDPI sequence lower, the same, or higher than it would have been prior to implementation?			Total
	Lower	Same	Higher	
Yes	357 (9.9%)	2,915 (80.8%)	334 (9.3%)	3,606 (100.0%)
No	500 (12.3%)	3,014 (74.1%)	555 (13.6%)	4,069 (100.0%)
Unknown	13 (10.2%)	94 (73.4%)	21 (16.4%)	128 (100.0%)

\* Note: 77 donors with unknown race/ethnicity were excluded.

**Figure 36. Post-Policy Deceased Kidney Donors by KDPI Formula, KDPI Sequence and History of Hypertension**

		History of Hypertension				No History of Hypertension			
Race/HCV-Inclusive KDPI	86–100% -	0.0% (N=0)	0.0% (N=0)	7.4% (N=266)	24.9% (N=898)	0.0% (N=0)	0.0% (N=0)	1.8% (N=72)	2.5% (N=102)
	35–85% -	0.1% (N=5)	2.0% (N=73)	52.0% (N=1,876)	7.4% (N=267)	1.1% (N=45)	4.6% (N=188)	34.4% (N=1,401)	2.1% (N=85)
	21–34% -	0.4% (N=13)	2.7% (N=99)	1.5% (N=54)	0.0% (N=0)	4.8% (N=195)	11.0% (N=447)	5.8% (N=235)	0.0% (N=0)
	0–20% -	1.2% (N=42)	0.3% (N=11)	0.1% (N=2)	0.0% (N=0)	26.1% (N=1,064)	5.3% (N=216)	0.5% (N=19)	0.0% (N=0)
		0–20%	21–34%	35–85%	86–100%	0–20%	21–34%	35–85%	86–100%
		Unknown History of Hypertension							
Race/HCV-Neutral KDPI	86–100% -	0.0% (N=0)	0.0% (N=0)	2.3% (N=3)	10.2% (N=13)				
	35–85% -	0.8% (N=1)	4.7% (N=6)	54.7% (N=70)	7.0% (N=9)				
	21–34% -	2.3% (N=3)	3.9% (N=5)	4.7% (N=6)	0.0% (N=0)				
	0–20% -	4.7% (N=6)	4.7% (N=6)	0.0% (N=0)	0.0% (N=0)				
		0–20%	21–34%	35–85%	86–100%				

Race/HCV-Neutral KDPI

Note: 77 donors with unknown race/ethnicity were excluded.

**Table 36** and **Figure 37** compare the KDPI sequence that each donor appeared in using each version of the KDRI/KDPI formula, stratified by donor history of diabetes. The majority of donors with and without a history of diabetes remained in the same KDPI sequence with both versions of the KDRI/KDPI formula.

**Table 36. Post-Policy Deceased Kidney Donors by KDPI Formula, KDPI Sequence and History of Diabetes**

History of Diabetes?	Was donor's KDPI sequence lower, the same, or higher than it would have been prior to implementation?			Total
	Lower	Same	Higher	
Yes	30 (2.1%)	1,071 (75.6%)	316 (22.3%)	1,417 (100.0%)
No	828 (13.2%)	4,865 (77.6%)	574 (9.2%)	6,267 (100.0%)
Unknown	12 (10.1%)	87 (73.1%)	20 (16.8%)	119 (100.0%)

\* Note: 77 donors with unknown race/ethnicity were excluded.

**Figure 37. Post-Policy Deceased Kidney Donors by KDPI Formula, KDPI Sequence and History of Diabetes**

History of Diabetes					No History of Diabetes				
Race/HCV-Inclusive KDPI	86–100% -	0.0% (N=0)	0.0% (N=0)	2.0% (N=29)	39.9% (N=566)	0.0% (N=0)	0.0% (N=0)	4.9% (N=309)	6.8% (N=429)
	35–85% -	0.0% (N=0)	0.1% (N=1)	35.4% (N=502)	18.6% (N=264)	0.8% (N=50)	4.1% (N=260)	44.4% (N=2,784)	1.4% (N=90)
	21–34% -	0.0% (N=0)	0.2% (N=3)	2.8% (N=40)	0.0% (N=0)	3.3% (N=209)	8.7% (N=543)	4.0% (N=249)	0.0% (N=0)
	0–20% -	0.0% (N=0)	0.5% (N=7)	0.4% (N=5)	0.0% (N=0)	17.7% (N=1,109)	3.5% (N=219)	0.3% (N=16)	0.0% (N=0)
		0–20%	21–34%	35–85%	86–100%	0–20%	21–34%	35–85%	86–100%
Unknown History of Diabetes									
Race/HCV-Neutral KDPI	86–100% -	0.0% (N=0)	0.0% (N=0)	2.5% (N=3)	15.1% (N=18)				
	35–85% -	0.8% (N=1)	5.0% (N=6)	51.3% (N=61)	5.9% (N=7)				
	21–34% -	1.7% (N=2)	4.2% (N=5)	5.0% (N=6)	0.0% (N=0)				
	0–20% -	2.5% (N=3)	5.9% (N=7)	0.0% (N=0)	0.0% (N=0)				
						0–20%	21–34%	35–85%	86–100%

Note: 77 donors with unknown race/ethnicity were excluded.



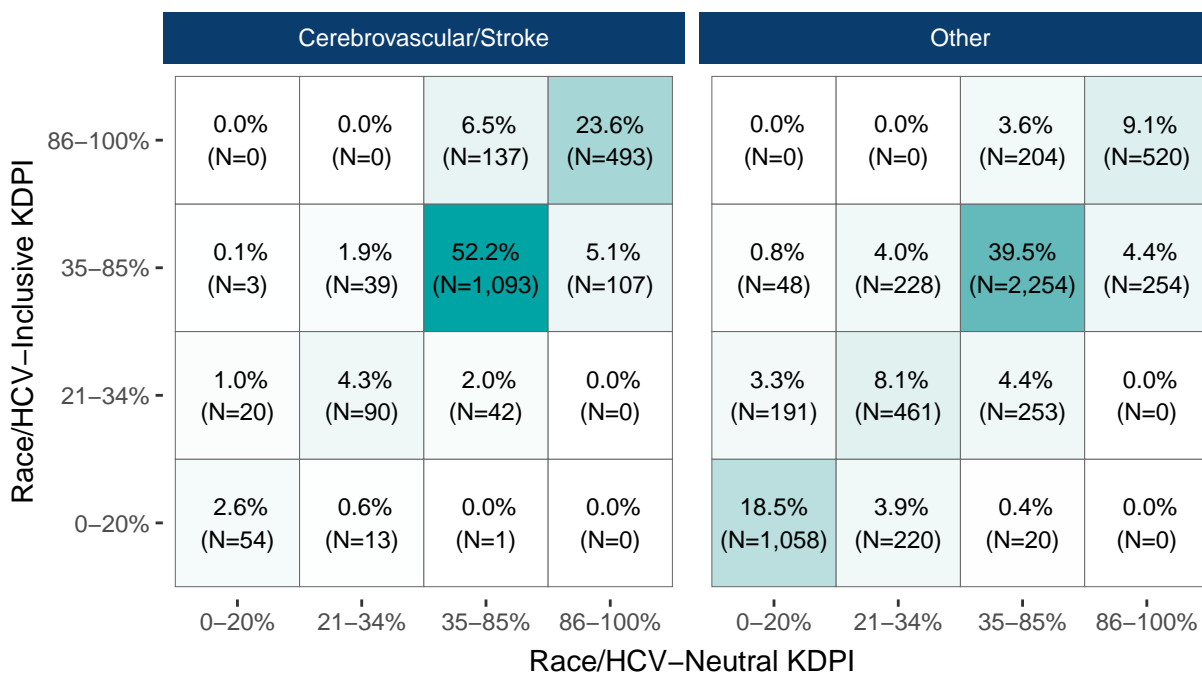
**Table 37** and **Figure 38** compare the KDPI sequence that each donor appeared in using each version of the KDRI/KDPI formula, stratified by the donor's cause of death. The majority of donors with cerebrovascular/stroke as the cause of death remained in the same KDPI sequence with both versions of the KDRI/KDPI formula, as did the majority of donors who died from other causes.

**Table 37. Post-Policy Deceased Kidney Donors by KDPI Formula, KDPI Sequence and Cause of Death**

Cause of Death	Was donor's KDPI sequence lower, the same, or higher than it would have been prior to implementation?			Total
	Lower	Same	Higher	
Cerebrovascular/Stroke	199 (9.5%)	1,730 (82.7%)	163 (7.8%)	2,092 (100.0%)
Other	671 (11.7%)	4,293 (75.2%)	747 (13.1%)	5,711 (100.0%)

\* Note: 77 donors with unknown race/ethnicity were excluded.

**Figure 38. Post-Policy Deceased Kidney Donors by KDPI Formula, KDPI Sequence and Cause of Death**



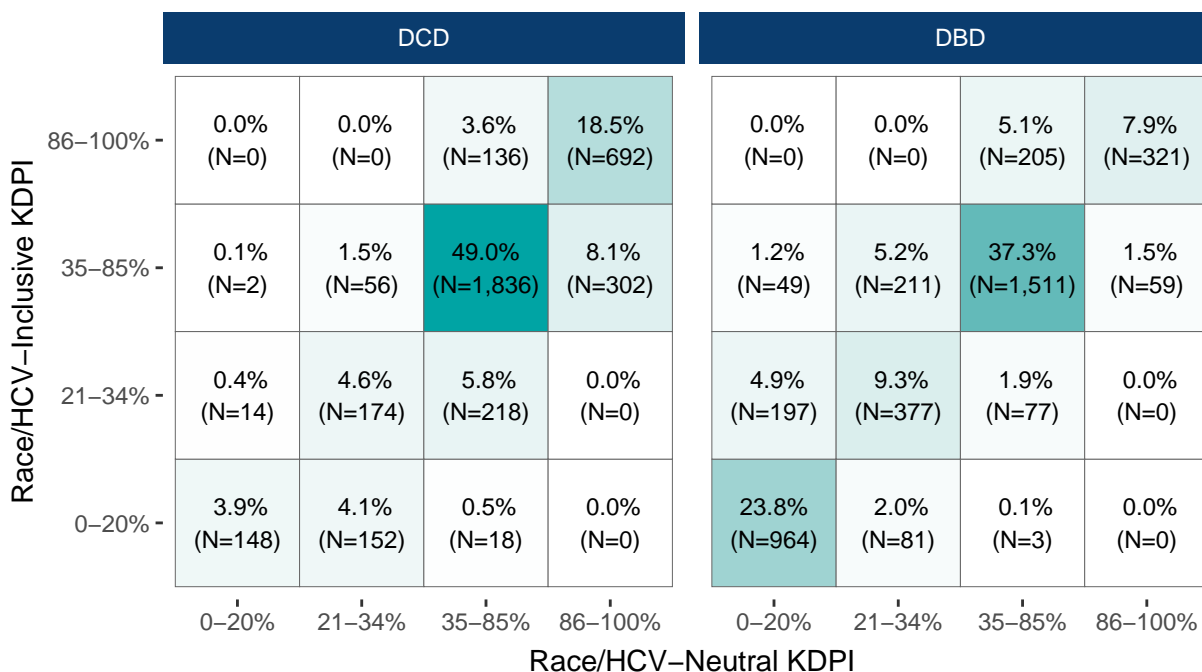
**Table 38** and **Figure 39** compare the KDPI sequence that each donor appeared in using each version of the KDRI/KDPI formula, stratified by donor type (DCD or DBD). The majority of both DCD and DBD donors remained in the same KDPI sequence with both versions of the KDRI/KDPI formula. However, a greater proportion of DCD donors than DBD donors were in a higher KDPI sequence than they would have been prior to implementation.

**Table 38. Post-Policy Deceased Kidney Donors by KDPI Formula, KDPI Sequence and Donor Type**

Donor Type	Was donor's KDPI sequence lower, the same, or higher than it would have been prior to implementation?			Total
	Lower	Same	Higher	
DCD	208 (5.5%)	2,850 (76.0%)	690 (18.4%)	3,748 (100.0%)
DBD	662 (16.3%)	3,173 (78.2%)	220 (5.4%)	4,055 (100.0%)

\* Note: 77 donors with unknown race/ethnicity were excluded.

**Figure 39. Post-Policy Deceased Kidney Donors by KDPI Formula, KDPI Sequence and Donor Type**



**Table 39** and **Figure 40** compare the KDPI sequence that each donor appeared in using each version of the KDRI/KDPI formula, stratified by donor BMI. For all BMI groups, the majority of donors remained in the same KDPI sequence with both versions of the KDRI/KDPI formula.

**Table 39. Post-Policy Deceased Kidney Donors by KDPI Formula, KDPI Sequence and Terminal Serum Creatinine**

BMI (kg/m <sup>2</sup> )	Was donor's KDPI sequence lower, the same, or higher than it would have been prior to implementation?			Total
	Lower	Same	Higher	
<18.5	20 (6.5%)	227 (73.7%)	61 (19.8%)	308 (100.0%)
18.5-24.9	220 (10.7%)	1,531 (74.6%)	300 (14.6%)	2,051 (100.0%)
25-29.9	278 (12.4%)	1,725 (77.0%)	236 (10.5%)	2,239 (100.0%)
30+	352 (11.0%)	2,540 (79.3%)	313 (9.8%)	3,205 (100.0%)

\* Note: 77 donors with unknown race/ethnicity were excluded.

**Figure 40. Post-Policy Deceased Kidney Donors by KDPI Formula, KDPI Sequence and BMI**

<18.5					18.5–24.9				
Race/HCV–Inclusive KDPI	86–100% -	0.0% (N=0)	0.0% (N=0)	1.9% (N=6)	11.4% (N=35)	0.0% (N=0)	0.0% (N=0)	4.0% (N=82)	12.4% (N=254)
	35–85% -	0.0% (N=0)	2.3% (N=7)	45.8% (N=141)	5.8% (N=18)	0.6% (N=12)	3.5% (N=71)	36.4% (N=747)	4.5% (N=92)
	21–34% -	2.3% (N=7)	8.1% (N=25)	7.1% (N=22)	0.0% (N=0)	2.7% (N=55)	6.1% (N=126)	5.2% (N=106)	0.0% (N=0)
	0–20% -	8.4% (N=26)	6.5% (N=20)	0.3% (N=1)	0.0% (N=0)	19.7% (N=404)	4.4% (N=90)	0.6% (N=12)	0.0% (N=0)
25–29.9					30+				
Race/HCV–Neutral KDPI	86–100% -	0.0% (N=0)	0.0% (N=0)	3.9% (N=87)	11.6% (N=260)	0.0% (N=0)	0.0% (N=0)	5.2% (N=166)	14.5% (N=464)
	35–85% -	1.0% (N=23)	4.2% (N=94)	41.6% (N=932)	3.8% (N=86)	0.5% (N=16)	3.0% (N=95)	47.6% (N=1,527)	5.1% (N=165)
	21–34% -	3.3% (N=74)	6.9% (N=154)	3.4% (N=77)	0.0% (N=0)	2.3% (N=75)	7.7% (N=246)	2.8% (N=90)	0.0% (N=0)
	0–20% -	16.9% (N=379)	3.1% (N=70)	0.1% (N=3)	0.0% (N=0)	9.5% (N=303)	1.7% (N=53)	0.2% (N=5)	0.0% (N=0)
		0–20%	21–34%	35–85%	86–100%	0–20%	21–34%	35–85%	86–100%

Race/HCV–Neutral KDPI

Note: 77 donors with unknown race/ethnicity were excluded.

## Conclusion

This policy updated the KDRI/KDPI formula used in the allocation of deceased donor kidneys to refit the formula without coefficients for donor race and HCV status. Median KDRI for non-Hispanic Black and HCV+ kidney donors was lower with the race/HCV-neutral formula compared to the original KDRI formula, as expected, and 34.4% of non-Hispanic Black and 47.9% of HCV+ kidney donors recovered post-implementation were in a lower KDPI sequence than they would have been in prior to implementation.

In the 6 months post-implementation, compared with the 6 months prior to implementation, median KDPI decreased for non-Hispanic Black donors and HCV+ donors, while median KDPI increased for all other racial/ethnic groups and for HCV- donors. The proportion of non-Hispanic Black donors in the KDPI 0-20% and 21-34% groups increased post-policy, as did the proportion of HCV+ donors. Non-use of kidneys from non-Hispanic Black donors decreased from 31.5% to 29.0%, while the overall kidney non-use rate remained stable at 28.9% pre-policy and 28.7% post-policy. The proportion of transplants from non-Hispanic Black donors remained similar from pre- to post-policy. The proportion of transplants from HCV+ donors also remained similar from pre- to post-policy.

The OPTN Minority Affairs Committee will continue to monitor the impact of this policy. The next monitoring report will assess 1 year of data pre- and post-implementation.

## References

1. Race and hepatitis C status no longer included in calculation used to estimate deceased donor kidney function; policy change anticipated to increase equity. Organ Procurement and Transplantation Network. October 31, 2024. Accessed June 13, 2025. <https://optn.transplant.hrsa.gov/news/race-and-hepatitis-c-status-no-longer-included-in-calculation-used-to-estimate-deceased-donor-kidney-function-policy-change-anticipated-to-increase-equity/>
2. Learn about KDPI. Organ Procurement and Transplantation Network. Accessed June 13, 2025. <https://optn.transplant.hrsa.gov/data/allocation-calculators/kdpi-calculator/learn-about-kdpi/>
3. Rao PS, Schaubel DE, Guidinger MK, et al. A comprehensive risk quantification score for deceased donor kidneys: The kidney donor risk index. *Transplantation*. 2009;88(2):231-236. DOI: 10.1097/TP.0b013e3181ac620b