

# Promote Efficiency of Lung Allocation

*OPTN Lung Transplantation Committee*

# Purpose of Proposal

- Add new data collection to aid evaluation of lung offers
- Provide overview of lung offer filters (slated for release in early 2024)
- Request feedback on other potential system enhancements
  - “Bypass bilateral and other lung” button if only single lung is available
  - Opt in to offers from isolated areas beyond specified maximum recovery distance

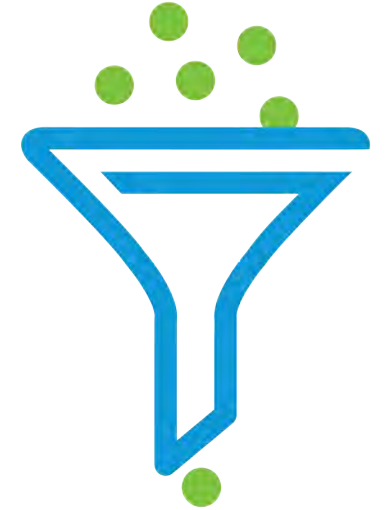


# What are offer filters?

- Currently, lung transplant programs can screen offers at the candidate level using donor acceptance criteria
- Kidney transplant programs have another tool called offer filters
- Unlike acceptance criteria, offer filters are multifactorial
  - Allows users to screen out offers based on combinations of factors
  - Example: Screen offers for DCD donors greater than 500 nm away if donor age is greater than 65
- Get to “Yes” faster – reduce unwanted offers & increase organ acceptance



# Lung offer filters coming early 2024



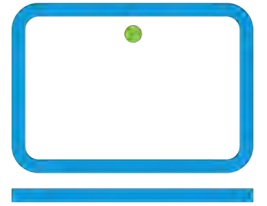
- Lung transplant programs will be able to build program-level filters based on:
  - Donor type (DBD/DCD)
  - Distance
  - Donor age is less than
  - Donor age is more than
- Candidates can be excluded from program-level filters using these criteria:
  - Candidate age less than
  - CPRA exceeds
  - Candidate blood type
  - Candidate match score is less than
  - Candidate match score exceeds

# Lung offer filters initial roll-out

- Offer Filter Manager
  - Manage filters that the OPTN Donor Data and Matching System uses
- Offer Filters Model
  - Identify potentially effective filters as a starting point
- Offer Filters Explorer
  - Assess impact of potential filters
  - Report of Donors and Candidates being filtered
- Apply Offer Filters in OPTN Donor Data and Matching System
  - Change lung match to apply filters



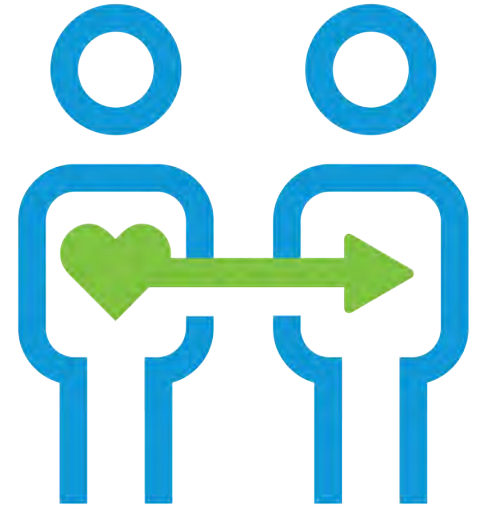
# Other potential system enhancements



- “Bypass bilateral and other lung” button if only single lung is available
  - Lung transplant programs indicate lung(s) and laterality needed for each candidate
  - If OPO only has a single lung available, this button would bypass all candidates on the match who either need bilateral lungs or the other lung
  - Currently OPOs have to manually bypass these programs or program must decline
- Opt in to offers from geographically isolated areas
  - Lung transplant programs enter “maximum recovery distance” for each candidate
  - If programs want offers from areas like Hawaii, Alaska, and Puerto Rico, they may need to set this distance very broadly and may be receiving excessive offers
  - “Opt in” approach would allow them to receive offers from those areas while setting a shorter “maximum recovery distance”

# Proposal

- Proposed new data collection in OPTN Donor Data and Matching System
  - History of anaphylaxis to peanuts and/or tree nuts
  - Previous sternotomies
- Lung transplant programs may rule out donors with these traits in combination with other factors
- Once data has been collected, can use offer filters model to determine if filters should be developed for these fields



# Rationale

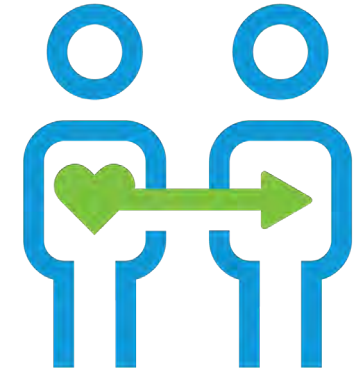
- Gains since implementation of continuous distribution –
  - More lung transplants performed
  - Fewer candidates removed from the waiting list due to death or too sick
- Challenges since implementation of continuous distribution –
  - Increased travel distance and complexity of lung allocation
  - Increased allocation time and offers prior to final acceptance
- Workgroup of Lung & OPO members established to evaluate approaches for improving allocation efficiency





# Member Actions

- OPOs would need to report additional data on donors regarding:
  - History of anaphylaxis to peanut and/or tree nut
  - Previous sternotomies
- Transplant programs would need to review the new data in the OPTN Donor and Data Matching System when evaluating offers
- Transplant programs are advised to explore and use lung offer filters



# What do you think?

- Will the proposed data fields assist in evaluating lung offers? Do OPOs anticipate any challenges reporting this information?
- What additional criteria would be helpful for evaluating or filtering lung offers?
- Do OPOs support the “Bypass bilateral and other lung” button concept?
- Do transplant programs support the opt-in concept for offers from isolated areas?



# FAQs

- Are lung transplant programs required to use offer filters?
- Did the Committee consider other potential data fields?
- What other efficiency-related topics has the workgroup discussed?

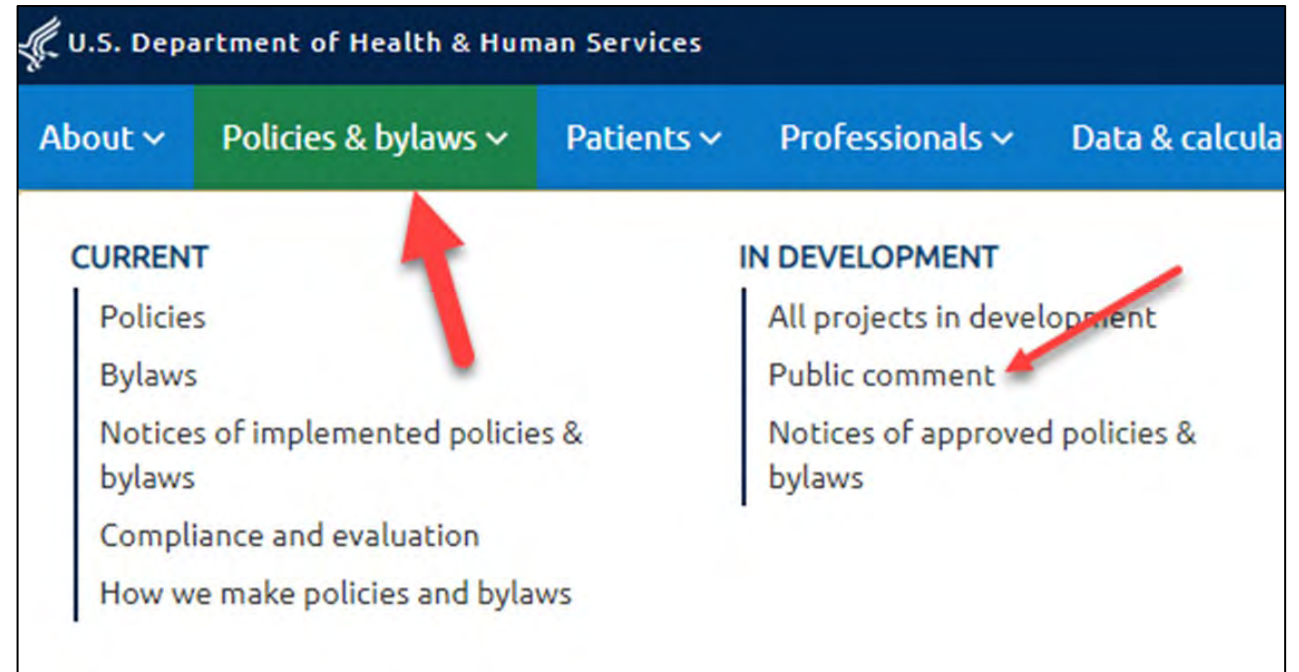
# Additional Questions?

- Kaitlin Swanner, Senior Policy Analyst
  - [Kaitlin.swanner@unos.org](mailto:Kaitlin.swanner@unos.org)

# Provide Feedback

Submit public comments on the OPTN website:

- **January 23 – March 19, 2024**
- **[optn.transplant.hrsa.gov](https://optn.transplant.hrsa.gov)**



# Regional Meeting Information

Visit <https://optn.transplant.hrsa.gov/about/regions/regional-meetings/> for the latest regional meeting information and meeting materials

The screenshot shows the OPTN website header with the logo and navigation menu. The breadcrumb trail is: Home » About » Regions » Regional meetings. The main content area has a heading 'Regional meetings' and introductory text: 'Regional meetings are held twice each year during the winter and summer public comment periods. Regional meetings are an opportunity to influence policy proposals, prepare for upcoming changes, and hear perspectives from the transplant community about improvements to organ allocation.'

What is the OPTN	▼	<b>Regional meetings</b>
OPTN membership	▼	
Governance	▲	<b>Regional meetings</b>
Board of directors		
Committees		
Regions		

Thank You For Listening!